



EQUIVALENCIAS

RODAMIENTOS DE AGUJAS

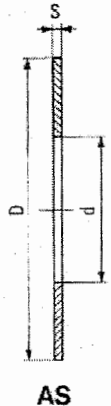


DISCOS AXIALES THRUST RACES FOR NTB SERIES

Metric Dimension

DIMENSION TABLE

IKO NUMERO	PESO	DIMENSIONES (mm)			INA	SKF	FAG	TORRINGTON
AS	(g)	d	D	S	AS	AS	AS	FTRA
AS 1024	2.9	10	24	1	AS 1024	AS 1024	AS 1024	FTRA-1024
AS 1226	3.2	12	26	1	AS 1226	AS 1226	AS 1226	FTRA-1226
AS 1528	3.4	15	28	1	AS 1528	AS 1528	AS 1528	FTRA-1528
AS 1629	3.6	16	29	1	—	—	—	—
AS 1730	3.7	17	30	1	AS 1730	AS 1730	AS 1730	FTRA-1730
AS 1831	3.9	18	31	1	—	—	—	—
AS 2035	5	20	35	1	AS 2035	AS 2035	AS 2035	FTRA-2035
AS 2542	6.9	25	42	1	AS 2542	AS 2542	AS 2542	FTRA-2542
AS 3047	7.9	30	47	1	AS 3047	AS 3047	AS 3047	FTRA-3047
AS 3552	8.9	35	52	1	AS 3552	AS 3552	AS 3552	FTRA-3552
AS 4060	12.1	40	60	1	AS 4060	AS 4060	AS 4060	FTRA-4060
AS 4565	13.3	45	65	1	AS 4565	AS 4565	AS 4565	FTRA-4565
AS 5070	14.5	50	70	1	AS 5070	AS 5070	AS 5070	FTRA-5070
AS 5578	18.5	55	78	1	AS 5578	AS 5578	AS 5578	FTRA-5578
AS 6085	22	60	85	1	AS 6085	AS 6085	AS 6085	FTRA-6085
AS 6590	23.5	65	90	1	AS 6590	AS 6590	AS 6590	FTRA-6590
AS 7095	25	70	95	1	AS 7095	AS 7095	AS 7095	FTRA-7095
AS 75100	26.5	75	100	1	AS 75100	AS 75100	AS 75100	FTRA-75100
AS 80105	28	80	105	1	AS 80105	AS 80105	AS 80105	FTRA-80105
AS 85110	29.5	85	110	1	AS 85110	AS 85110	AS 85110	FTRA-85110
AS 90120	38	90	120	1	AS 90120	AS 90120	AS 90120	FTRA-90120
AS 100135	50	100	135	1	AS 100135	AS 100135	AS 100135	FTRA-100135



CORONAS AXIALES THRUST NEEDLE ROLLER BEARINGS

Metric Dimension

DIMENSION TABLE

IKO NUMERO	PESO	DIMENSIONES (mm)			CAP. DINAMICA DE CARGA BASICA (kgf)	CAP. ESTATICA DE CARGA BASICA (kgf)	INA	SKF	FAG	TORRINGTON
NTB	(g)	d	D	Dw			AXK	AXK	AXK	FNT(A)
NTB 1024	3.3	10	24	2	800	2440	AXK 1024	AXK 1024	AXK 1024	FNT-1024
NTB 1226	3.8	12	26	2	850	2750	AXK 1226	AXK 1226	AXK 1226	FNT-1226
NTB 1528	4.1	15	28	2	900	3050	AXK 1528	AXK 1528	AXK 1528	FNT-1528
NTB 1629	4.3	16	29	2	920	3200	—	—	—	—
NTB 1730	4.5	17	30	2	950	3360	AXK 1730	AXK 1730	AXK 1730	FNT-1730
NTB 1831	4.7	18	31	2	970	3510	—	—	—	—
NTB 2035	6.1	20	35	2	1200	4740	AXK 2035	AXK 2035	AXK 2035	FNTA-2035
NTB 2542	8.2	25	42	2	1470	6600	AXK 2542	AXK 2542	AXK 2542	FNT-2542
NTB 3047	9.4	30	47	2	1570	7470	AXK 3047	AXK 3047	AXK 3047	FNTA-3047
NTB 3552	10.6	35	52	2	1670	8350	AXK 3552	AXK 3552	AXK 3552	FNT-3552
NTB 40603	22	40	60	3	2470	11000	AXK 4060	AXK 4060	AXK 4060	FNT-4046
NTB 4565	24.5	45	65	3	2640	12400	AXK 4565	AXK 4565	AXK 4565	FNT-4565
NTB 5070	26.5	50	70	3	2810	13700	AXK 5070	AXK 5070	AXK 5070	FNT-5070
NTB 5578	33.5	55	78	3	3300	17500	AXK 5578	AXK 5578	AXK 5578	FNT-5578
NTB 6085	38.5	60	85	3	3900	22300	AXK 6085	AXK 6085	AXK 6085	FNTA-6085
NTB 6590	41.5	65	90	3	4090	24100	AXK 6590	AXK 6590	AXK 6590	FNTA-6590
NTB 7095	61	70	95	4	4830	24900	AXK 7095	AXK 7095	AXK 7095	FNTA-7095
NTB 75100	65	75	100	4	4930	26100	AXK 75100	AXK 75100	AXK 75100	FNT-75100
NTB 80105	68.5	80	105	4	5050	27200	AXK 80105	AXK 80105	AXK 80105	FNTA-80105
NTB 85110	72	85	110	4	5130	28400	AXK 85110	AXK 85110	AXK 85110	FNTA-85110
NTB 90120	92	90	120	4	6570	40100	AXK 90120	AXK 90120	AXK 90120	FNTA-90120
NTB 100135	119	100	135	4	8190	55200	AXK 100135	AXK 100135	AXK 100135	FNTA-100135
NTB 110145	129	110	145	4	8480	59000	AXK 110145	AXK 110145	AXK 110145	—
NTB 120155	139	120	155	4	8960	64700	AXK 120155	AXK 120155	AXK 120155	—
NTB 130170	225	130	170	5	12300	85500	AXK 130170	AXK 130170	AXK 130170	—

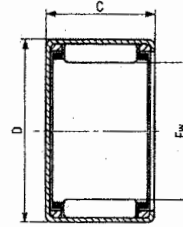
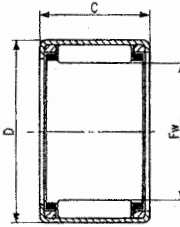




CASQUILLOS CON FONDO

SHELL TYPE
NEEDLE ROLLER BEARINGS

Inch Dimension



BA..Z

BAM

DIMENSION TABLE

INTERCHANGE TABLE

IKO NUMERO ABIERTO BA..Z	PESO (g)	IKO NUMERO CERRADO BAM	PESO (g)	DIMENSIONES						CAP. DINAMICA DE CARGA BASICA (kgf)	CAP. ESTATICA DE CARGA BASICA (kgf)	PISTA INTERIOR IRB	TORRINGTON		INA	
				Fw		D		C					ABIERTO J	CERRADO MJ	ABIERTO SCE	CERRADO BCE
				pulg	mm	pulg	mm	pulg	mm							
BA 1710 Z	23.5	BAM 1710	26.5	1 1/4	26.988	1 1/4	33.338	1	15.88	1190	1950	—	—	—	—	
BA 1716 Z	37	BAM 1716	40.5	1 1/4	26.988	1 1/4	33.338	1	25.40	2040	3900	—	—	—	—	
BA 186 Z	14.5	BAM 186	18.1	1 1/4	28.575	1 1/4	34.925	3/4	9.52	650	910	—	—	SCE 186	BCE 186	
BA 188 Z	19.5	BAM 188	23	1 1/4	28.575	1 1/4	34.925	1/2	12.70	880	1360	IRB 148	J-188	MJ-1881	SCE 188	BCE 188
BA 1812 Z	29.5	BAM 1812	33	1 1/4	28.575	1 1/4	34.925	3/4	19.05	1530	2750	IRB 1412	J-1812	MJ-18121	SCE 1812	BCE 1812
BA 1816Z	39	BAM 1816	42.5	1 1/4	28.575	1 1/4	34.925	1	25.40	2090	4110	IRB 1416	J-1816	MJ-18161	SCE 1816	BCE 1816
BA 1820Z	48.5	BAM 1820	52	1 1/4	28.575	1 1/4	34.925	1 1/4	31.75	2620	5490	IRB 1420	—	—	—	—
BA 1910Z	32.5	BAM 1910	37.5	1 1/4	30.162	1 1/4	38.100	3/4	15.88	1530	2300	—	—	—	—	—
BA 1916 Z	52	BAM 1916	57	1 1/4	30.162	1 1/4	38.100	1	25.40	2630	4620	—	—	SCE 1916	BCE 1916	
BA 208 Z	21.5	BAM 208	26	1 1/4	31.750	1 1/4	38.100	3/4	12.70	930	1500	IRB 168	—	—	SCE 208	BCE 208
BA 2010 Z	27	BAM 2010	31.5	1 1/4	31.750	1 1/4	38.100	3/4	15.88	1280	2260	IRB 1610	—	—	SCE 2010	BCE 2010
BA 2012 Z	32.5	BAM 2012	37	1 1/4	31.750	1 1/4	38.100	3/4	19.05	1600	3020	IRB 1612	J-2012	MJ-20121	SCE 2012	BCE 2012
BA 2016 Z	43	BAM 2016	47.5	1 1/4	31.750	1 1/4	38.100	1	25.40	2190	4520	IRB 1616	J-2016	MJ-20161	SCE 2016	BCE 2016
BA 2020 Z	53.5	BAM 2020	58	1 1/4	31.750	1 1/4	38.100	1 1/4	31.75	2750	6040	IRB 1620	—	—	SCE 2020	BCE 2020
BA 218 Z	28.5	BAM 218	35	1 1/4	33.338	1 1/4	41.275	1/2	12.70	1130	1610	IRB 168-1	—	—	—	—
BA 2110 Z	35.5	BAM 2110	41.5	1 1/4	33.338	1 1/4	41.275	3/4	15.88	1570	2440	IRB 1610-1	—	—	SCE 2110	BCE 2110
BA 2112 Z	43	BAM 2112	49	1 1/4	33.338	1 1/4	41.275	3/4	19.05	1970	3270	IRB 1612-1	—	—	—	—
BA 228 Z	23.5	BAM 228	29	1 1/4	34.925	1 1/4	41.275	1/2	12.70	1000	1700	IRB 188	J-228	MJ-2281	SCE 228	BCE 228
BA 2212 Z	35.5	BAM 2212	41	1 1/4	34.925	1 1/4	41.275	3/4	19.05	1720	3420	IRB 1812	—	—	SCE 2212	BCE 2212
BA 2216 Z	47.5	BAM 2216	53	1 1/4	34.925	1 1/4	41.275	1	25.40	2350	5120	IRB 1816	—	—	SCE 2216	BCE 2216
BA 2220 Z	59	BAM 2220	64	1 1/4	34.925	1 1/4	41.275	1 1/4	31.75	2950	6840	IRB 1820	—	—	SCE 2220	BCE 2220
BA 248 Z	38.5	BAM 248	47.5	1 1/2	38.100	1 1/2	47.625	1/2	12.70	1320	1820	—	—	SCE 248	BCE 248	
BA 2410 Z	48.5	BAM 2410	57.5	1 1/2	38.100	1 1/2	47.625	3/4	15.88	1820	2770	IRB 2010	—	—	SCE 2410	BCE 2410
BA 2412 Z	58.5	BAM 2412	67.5	1 1/2	38.100	1 1/2	47.625	3/4	19.05	2300	3740	—	J-2412	MJ-24121	SCE 2412	BCE 2412
BA 2414 Z	69	BAM 2414	78	1 1/2	38.100	1 1/2	47.625	3/4	22.22	2720	4650	IRB 2014	—	—	SCE 2414	BCE 2414
BA 2416 Z	79	BAM 2416	88	1 1/2	38.100	1 1/2	47.625	1	25.40	3170	5650	IRB 2016	J-2416	MJ-24161	SCE 2416	BCE 2416
BA 2420 Z	97.5	BAM 2420	106	1 1/2	38.100	1 1/2	47.625	1 1/4	31.75	3980	7570	IRB 2020	J-2420	MJ-24201	SCE 2420	BCE 2420
BA 268 Z	41	BAM 268	51.5	1 1/2	41.275	2	50.800	1/2	12.70	1400	2020	—	—	—	—	—
BA 2610 Z	52	BAM 2610	62.5	1 1/2	41.275	2	50.800	3/4	15.88	1930	3060	IRB 2210	—	—	SCE 2610	BCE 2610
BA 2616 Z	85	BAM 2616	95.5	1 1/2	41.275	2	50.800	1	25.40	3370	6250	—	J-2616	MJ-26161	—	—
BA 2620 Z	105	BAM 2620	115	1 1/2	41.275	2	50.800	1 1/4	31.75	4220	8370	IRB 2220	—	—	SCE 2620	BCE 2620
BA 2812 Z	87.5	BAM 2812	79.5	1 3/4	44.450	2 1/4	53.975	3/4	19.05	2570	4540	IRB 2412	J-2812	MJ-28121	SCE 2812	BCE 2812
BA 2816 Z	91	BAM 2816	103	1 3/4	44.450	2 1/4	53.975	1	25.40	3540	6870	IRB 2416	J-2816	MJ-28161	SCE 2816	BCE 2816
BA 2820 Z	112	BAM 2820	125	1 3/4	44.450	2 1/4	53.975	1 1/4	31.75	4450	9190	—	—	—	—	—
BA 2824 Z	136	BAM 2824	148	1 3/4	44.450	2 1/4	53.975	1 1/2	38.10	5300	11500	IRB 2424	J-2824	MJ-28241	SCE 2824	BCE 2824
BA 308 Z	47.5	BAM 308	61	1 1/2	47.625	2 1/4	57.150	1/2	12.70	1500	2320	IRB 248-1	—	—	—	—
BA 3010 Z	60	BAM 3010	74	1 1/2	47.625	2 1/4	57.150	3/4	15.88	2070	3520	IRB 2410-1	—	—	—	—
BA 3012 Z	72.5	BAM 3012	86.5	1 1/2	47.625	2 1/4	57.150	3/4	19.05	2620	4750	—	—	—	—	—
BA 3016 Z	97.5	BAM 3016	112	1 1/2	47.625	2 1/4	57.150	1	25.40	3610	7190	—	J-3016	MJ-30161	—	—
BA 328 Z	50	BAM 328	66	2	50.800	2 3/4	60.325	1/2	12.70	1570	2520	—	—	—	SCE 328	BCE 328
BA 3216 Z	104	BAM 3216	119	2	50.800	2 3/4	60.325	1	25.40	3780	7800	IRB 2616	J-3216	MJ-32161	SCE 3216	BCE 3216
BA 3220 Z	128	BAM 3220	144	2	50.800	2 3/4	60.325	1 1/4	31.75	4750	10400	IRB 2720	—	—	SCE 3220	BCE 3220
BA 3224 Z	155	BAM 3224	170	2	50.800	2 3/4	60.325	1 1/2	38.10	5660	13100	—	—	—	—	—
BAW 3228 Z	180	BAMW 3228	196	2	50.800	2 3/4	60.325	1 3/4	44.45	5880	13800	IRB 2628	—	—	—	—
BA 348 Z	53	BAM 348	70.5	2 1/4	53.975	2 1/4	63.500	1/2	12.70	1640	2720	—	—	—	—	—
BA 3416 Z	109	BAM 3416	127	2 1/4	53.975	2 1/4	63.500	1	25.40	3950	8420	IRB 3016	—	—	SCE 3416	BCE 3416
BA 3424 Z	162	BAM 3424	180	2 1/4	53.975	2 1/4	63.500	1 1/2	38.10	5910	14100	IRB 3024	—	—	—	—
BA 3612 Z	85.5	BAM 3612	105	2 1/4	57.150	2 1/4	66.675	3/4	19.05	2910	5770	—	—	—	SCE 3612	BCE 3612
BA 3616 Z	115	BAM 3616	135	2 1/4	57.150	2 1/4	66.675	1	25.40	4010	8730	—	J-3616	—	SCE 3616	BCE 3616
BA 3620 Z	143	BAM 3620	163	2 1/4	57.150	2 1/4	66.675	1 1/4	31.75	5040	11700	—	—	—	—	—
BA 3624 Z	172	BAM 3624	192	2 1/4	57.150	2 1/4	66.675	1 1/2	38.10	6000	14800	—	—	—	—	—
BA 4216 Z	133	BAM 4216	161	2 3/4	66.675	3	76.200	1	25.40	4280	8990	IRB 3616	—	—	—	—
BA 4410 Z	85.5	BAM 4410	115	2 3/4	69.850	3 1/4	79.375	3/4	15.88	2550	5190	—	—	—	—	—
BA 4412 Z	103	BAM 4412	133	2 3/4	69.850	3 1/4	79.375	3/4	19.05	3220	7010	—	J-4412	—	SCE 4412	BCE 4412
BA 4416 Z	139	BAM 4416	169	2 3/4	69.850	3 1/4	79.375	1	25.40	4440	10800	IRB 4016	—	—	—	—
BA 4420 Z	173	BAM 4420	205	2 3/4	69.850	3 1/4	79.375	1 1/4	31.75	5570	14200	IRB 4020	—	—	—	—



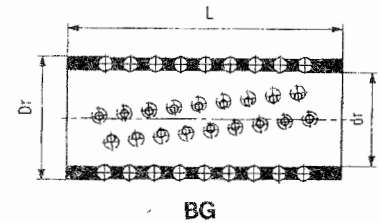
JAULA DE BOLAS

STROKE ROTARY CAGES

Metric Dimension

DIMENSION TABLE

IKO	NUMERO	PESO	DIMENSIONES			CAP DINAMICA DE CARGA BASICA (kgf)	CAP ESTATICA DE CARGA BASICA (kgf)
			dr	Dr	L		
BG		(g)					
BG 192555		33	19	25	55	240	270
BG 222860		40	22	28	60	250	300
BG 253165		48	25	31	65	270	350
BG 283670		76	28	36	70	390	470
BG 324075		93	32	40	75	460	620
BG 384880		162	38	48	80	690	960



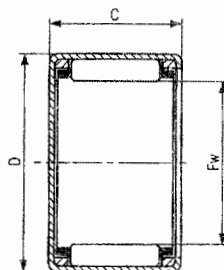
BG



CASQUILLO CON FONDO

SHELL TYPE
NEEDLE ROLLER BEARINGS

Metric Dimension



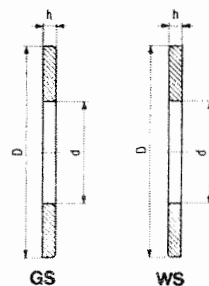
TLAM

DIMENSION TABLE

IKO	NUMERO	PESO	DIMENSIONES (mm)			CAP DINAMICA DE CARGA BASICA (kgf)	CAP ESTATICA DE CARGA BASICA (kgf)	PISTA INTERIOR IRT	INTERCHANGE TABLE		
			Fw	D	C				INA	SKF	FAG
TLAM		(g)							BK	BK	BK
TLAM 48 N	1.67	4	8	8	170	130	—	—	BK 0408 TN	BK 0408 TN	BK 0408 TN
TLAM 59	2	5	9	9	190	160	—	—	BK 0509	BK 0509	BK 0509
TLAM 69	2.3	6	10	9	210	190	—	—	BK 0609	BK 0609	BK 0609
TLAM 79	2.7	7	11	9	250	250	—	—	BK 0709	BK 0709	BK 0709
TLAM 810	3.3	8	12	10	340	370	—	—	BK 0810	BK 0810	BK 0810
TLAM 910	3.6	9	13	10	360	410	—	—	BK 0910	BK 0910	BK 0910
TLAM 912	4.3	9	13	12	450	560	—	—	BK 0912	BK 0912	BK 0912
TLAM 1010	4	10	14	10	390	480	IRT 710	—	BK 1010	BK 1010	BK 1010
TLAM 1012	4.8	10	14	12	500	660	IRT 712	—	BK 1012	BK 1012	BK 1012
TLAM 1015	5.9	10	14	15	650	820	IRT 715	—	BK 1015	BK 1015	BK 1015
TLAM 1210	4.7	12	16	10	440	580	IRT 810	—	BK 1210	BK 1210	BK 1210
TLAM 1212	9.4	12	18	12	650	760	IRT 812	—	BK 1212	BK 1212	BK 1212
TLAM 1312	10.1	13	19	12	690	830	IRT 1012	—	BK 1312	BK 1312	BK 1312
TLAM 1412	10.8	14	20	12	720	900	IRT 1012-2	—	BK 1412	BK 1412	BK 1412
TLAM 1416	14.3	14	20	16	910	1220	IRT 1016-2	—	—	—	—
TLAM 1512	11.5	15	21	12	750	970	IRT 1212	—	BK 1512	BK 1512	BK 1512
TLAM 1516	15.2	15	21	16	950	1310	IRT 1216	—	BK 1516	BK 1516	BK 1516
TLAM 1522	20.5	15	21	22	1390	2130	IRT 1222	—	BK 1522	BK 1522	BK 1522
TLAM 1612	12.2	16	22	12	780	1040	IRT 1212-1	—	BK 1612	BK 1612	BK 1612
TLAM 1616	16.1	16	22	16	990	1400	IRT 1216-1	—	BK 1616	BK 1616	BK 1616
TLAM 1622	21.5	16	22	22	1440	2280	IRT 1222-1	—	BK 1622	BK 1622	BK 1622
TLAM 1712	13	17	23	12	810	1110	—	—	BK 1712	BK 1712	BK 1712
TLAM 1812	13.7	18	24	12	840	1180	IRT 1512	—	BK 1812	BK 1812	BK 1812
TLAM 1816	17.9	18	24	16	1080	1590	IRT 1516	—	BK 1816	BK 1816	BK 1816
TLAM 2012	15.2	20	26	12	890	1320	—	—	BK 2012	BK 2012	BK 2012
TLAM 2016	19.9	20	26	16	1130	1780	IRT 1716	—	BK 2016	BK 2016	BK 2016
TLAM 2020	24	20	26	20	1480	2520	IRT 1720	—	BK 2020	BK 2020	BK 2020
TLAM 2030	35	20	26	30	2270	4380	IRT 1730	—	BK 2030	BK 2030	BK 2030
TLAM 2212	18.1	22	28	12	940	1450	—	—	BK 2212	BK 2212	BK 2212
TLAM 2216	24	22	26	16	1190	1860	IRT 1716-2	—	BK 2216	BK 2216	BK 2216
TLAM 2220	29	22	28	20	1560	2780	IRT 1720-2	—	BK 2220	BK 2220	BK 2220
TLAM 2512	23.5	25	32	12	960	1410	—	—	BK 2512	BK 2512	BK 2512
TLAM 2516	28.5	25	32	16	1300	2090	—	—	BK 2516	BK 2516	BK 2516
TLAM 2520	36	25	32	20	1720	2980	IRT 2020-1	—	BK 2520	BK 2520	BK 2520
TLAM 2526	45.5	25	32	26	2300	4330	IRT 2026-1	—	BK 2526	BK 2526	BK 2526
TLAMW 2538	62	25	32	38	2950	5970	IRT 2038-1	—	BK 2538	BK 2538	BK 2538
TLAM 2816	33.5	28	35	16	1410	2390	—	—	BK 2816	BK 2816	BK 2816
TLAM 2820	40.5	28	35	20	1860	3420	IRT 2220-1	—	BK 2820	BK 2820	BK 2820
TLAM 3012	29	30	37	12	1060	1700	—	—	BK 3012	BK 3012	BK 3012
TLAM 3016	36	30	37	16	1430	2500	—	—	BK 3016	BK 3016	BK 3016
TLAM 3018	40	30	37	18	1670	3040	—	—	—	—	—
TLAM 3020	43.5	30	37	20	1890	3580	IRT 2520-1	—	BK 3020	BK 3020	BK 3020
TLAM 3026	54.5	30	37	26	2530	5190	IRT 2526-1	—	BK 3026	BK 3026	BK 3026
TLAMW 3038	74.5	30	37	38	3250	7180	IRT 2538-1	—	BK 3038	BK 3038	BK 3038
TLAM 3512	34.5	35	42	12	1180	2050	IRT 3012	—	BK 3512	BK 3512	—
TLAM 3516	42.5	35	42	16	1800	3020	—	—	BK 3516	BK 3516	—
TLAM 3520	51	35	42	20	2110	4320	IRT 3020	—	BK 3520	BK 3520	—
TLAM 4012	40	40	47	12	1260	2330	—	—	BK 4012	BK 4012	—
TLAM 4016	49	40	47	16	1700	3440	—	—	BK 4016	BK 4016	—
TLAM 4020	58.5	40	47	20	2250	4910	IRT 3520	—	BK 4020	BK 4020	—
TLAM 4516	56	45	52	16	1810	3980	—	—	BK 4516	BK 4516	—
TLAM 4520	67	45	52	20	2390	5510	IRT 4020	—	BK 4520	BK 4520	—
TLAM 5020	84.5	50	58	20	2930	6540	IRT 4520	—	BK 5020	BK 5020	—
TLAM 5025	107	50	58	25	3780	9010	IRT 4525	—	BK 5025	BK 5025	—
TLAM 5520	98.5	55	63	20	3040	7070	IRT 5020-1	—	BK 5520	BK 5520	—
TLAM 5525	118	55	63	25	3910	9750	IRT 5025-1	—	—	—	—



DISCOS AXIALES
THRUST RACES
FOR THRUST BEARINGS
 Metric Dimension



DIMENSION TABLE

INTERCHANGE TABLE

IKO NUMERO		PESO (g)	DIMENSIONES (mm)			INA		SKF		FAG	
GS	WS		d	D	h	GS	WS	GS	WS	GS	WS
GS 1024	WS 1024	8	10	24	2.75	—	—	—	—	—	—
GS 1226	WS 1226	8.9	12	26	2.75	—	—	—	—	—	—
GS 1528	WS 1528	9.3	15	28	2.75	GS 81102	WS 81102	GS 81102	WS 81102	GS 81102	WS 81102
GS 1629	WS 1629	9.8	16	29	2.75	—	—	—	—	—	—
GS 1730	WS 1730	10.2	17	30	2.75	GS 81103	WS 81103	GS 81103	WS 81103	GS 81103	WS 81103
GS 1831	WS 1831	10.7	18	31	2.75	—	—	—	—	—	—
GS 2035	WS 2035	13.8	20	35	2.75	GS 81104	WS 81104	GS 81104	WS 81104	GS 81104	WS 81104
GS 2542	WS 2542	21	25	42	3	GS 81105	WS 81105	GS 81105	WS 81105	GS 81105	WS 81105
GS 3047	WS 3047	24	30	47	3	GS 81106	WS 81106	GS 81106	WS 81106	GS 81106	WS 81106
GS 3052	WS 3052	45	30	52	4.25	GS 81206	WS 81206	GS 81206	WS 81206	GS 81206	WS 81206
GS 3552	WS 3552	31.5	35	52	3.5	GS 81107	WS 81107	GS 81107	WS 81107	GS 81107	WS 81107
GS 3562	WS 3562	81	35	62	5.25	GS 81207	WS 81207	GS 81207	WS 81207	GS 81207	WS 81207
GS 4060	WS 4060	42.5	40	60	3.5	GS 81108	WS 81108	GS 81108	WS 81108	GS 81108	WS 81108
GS 4068	WS 4068	89	40	68	5	GS 81208	WS 81208	GS 81208	WS 81208	GS 81208	WS 81208
GS 4565	WS 4565	53.5	45	65	4	GS 81109	WS 81109	GS 81109	WS 81109	GS 81109	WS 81109
GS 4573	WS 4573	108	45	73	5.5	GS 81209	WS 81209	GS 81209	WS 81209	GS 81209	WS 81209
GS 5070	WS 5070	58.5	50	70	4	GS 81110	WS 81110	GS 81110	WS 81110	GS 81110	WS 81110
GS 5078	WS 5078	118	50	78	5.5	—	—	—	—	—	—
GS 5578	WS 5578	93	55	78	5	GS 81111	WS 81111	GS 81111	WS 81111	GS 81111	WS 81111
GS 5590	WS 5590	225	55	90	7	GS 81211	WS 81211	GS 81211	WS 81211	GS 81211	WS 81211
GS 6085	WS 6085	105	60	85	4.75	GS 81112	WS 81112	GS 81112	WS 81112	GS 81112	WS 81112
GS 6095	WS 6095	240	60	95	7.5	GS 81212	WS 81212	GS 81212	WS 81212	GS 81212	WS 81212
GS 60130	WS 60130	650	60	130	8	—	—	—	—	—	—
GS 6590	WS 6590	124	65	90	5.25	GS 81113	WS 81113	GS 81113	WS 81113	GS 81113	WS 81113
GS 65100	WS 65100	275	65	100	8	GS 81213	WS 81213	GS 81213	WS 81213	GS 81213	WS 81213
GS 7095	WS 7095	132	70	95	5.25	GS 81114	WS 81114	GS 81114	WS 81114	GS 81114	WS 81114
GS 70105	WS 70105	290	70	105	8	GS 81214	WS 81214	GS 81214	WS 81214	GS 81214	WS 81214
GS 70140	WS 70140	680	70	140	8	—	—	—	—	—	—
GS 75100	WS 75100	153	75	100	5.75	GS 81115	WS 81115	GS 81115	WS 81115	GS 81115	WS 81115
GS 75110	WS 75110	310	75	110	8	GS 81215	WS 81215	GS 81215	WS 81215	GS 81215	WS 81215
GS 80105	WS 80105	162	80	105	5.75	GS 81116	WS 81116	GS 81116	WS 81116	GS 81116	WS 81116
GS 80115	WS 80115	345	80	115	8.5	GS 81216	WS 81216	GS 81216	WS 81216	GS 81216	WS 81216
GS 80150	WS 80150	790	80	150	8	—	—	—	—	—	—
GS 85110	WS 85110	170	85	110	5.75	GS 81117	WS 81117	GS 81117	WS 81117	GS 81117	WS 81117
GS 85125	WS 85125	475	85	125	9.5	GS 81217	WS 81217	GS 81217	WS 81217	GS 81217	WS 81217
GS 90120	WS 90120	250	90	120	6.5	GS 81118	WS 81118	GS 81118	WS 81118	GS 81118	WS 81118
GS 90135	WS 90135	645	90	135	10.5	GS 81218	WS 81218	GS 81218	WS 81218	GS 81218	WS 81218
GS 90160	WS 90160	855	90	160	8	—	—	—	—	—	—
GS 100135	WS 100135	350	100	135	7	GS 81120	WS 81120	GS 81120	WS 81120	GS 81120	WS 81120
GS 100150	WS 100150	870	100	150	11.5	GS 81220	WS 81220	GS 81220	WS 81220	GS 81220	WS 81220

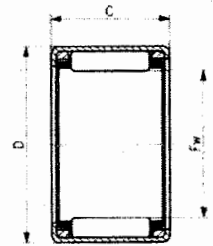
IKO**TLA.:Z****CASQUILLO DE AGUJAS****SHELL TYPE****NEEDLE ROLLER BEARINGS**

Metric Dimension

DIMENSION TABLE

INTERCHANGE TABLE

IKO NUMERO TLA.:Z	PESO (g)	DIMENSIONES (mm)			CAP. DINAMICA DE CARGA BASICA (kgf)	CAP. ESTATICA DE CARGA BASICA (kgf)	PISTA INTERIOR IRT	INA HK	SKF HK	FAG HK	TORRINGTON FJ
		Fw	D	C							
TLA 48 ZN	1.54	4	8	8	170	130	—	HK 0408 TN	HK 0408 TN	HK 0408 TN	FJV-48
TLA 59 Z	1.9	5	9	9	190	160	—	HK 0509	HK 0509	HK 0509	FJV-59
TLA 69 Z	2.2	6	10	9	210	190	—	HK 0609	HK 0609	HK 0609	FJ-69
TLA 79 Z	2.5	7	11	9	250	250	—	HK 0709	HK 0709	HK 0709	FJV-79
TLA 810 Z	3.1	8	12	10	340	370	—	HK 0810	HK 0810	HK 0810	FJV-810
TLA 910 Z	3.4	9	13	10	360	410	—	HK 0910	HK 0910	HK 0910	FJV-910
TLA 912 Z	4	9	13	12	450	560	—	HK 0912	HK 0912	HK 0912	—
TLA 1010 Z	3.7	10	14	10	390	480	IRT 710	HK 1010	HK 1010	HK 1010	FJV-1010
TLA 1012 Z	4.4	10	14	12	500	660	IRT 712	HK 1012	HK 1012	HK 1012	FJV-1012
TLA 1015 Z	5.5	10	14	15	650	920	IRT 715	HK 1015	HK 1015	HK 1015	—
TLA 1210 Z	4.3	12	16	10	440	590	IRT 810	HK 1210	HK 1210	HK 1210	FJV-1210
TLA 1212 Z	8.6	12	18	12	650	760	IRT 812	HK 1212	HK 1212	HK 1212	FJHV-1212
TLA 1312 Z	9.2	13	19	12	690	830	IRT 1012	HK 1312	HK 1312	HK 1312	FJ-1312
TLA 1412 Z	9.8	14	20	12	720	900	IRT 1012-2	HK 1412	HK 1412	HK 1412	FJV-1412
TLA 1416 Z	13.2	14	20	16	910	1220	IRT 1016-2	—	—	—	—
TLA 1512 Z	10.4	15	21	12	750	970	IRT 1212	HK 1512	HK 1512	HK 1512	FJV-1512
TLA 1516 Z	14	15	21	16	950	1310	IRT 1216	HK 1516	HK 1516	HK 1516	FJ-1516
TLA 1522 Z	19.1	15	21	22	1390	2130	IRT 1222	HK 1522	HK 1522	HK 1522	FJV-1522
TLA 1612 Z	10.9	16	22	12	780	1040	IRT 1212-1	HK 1612	HK 1612	HK 1612	FJV-1612
TLA 1616 Z	14.8	16	22	16	990	1400	IRT 1216-1	HK 1616	HK 1616	HK 1616	FJV-1616
TLA 1622 Z	20	16	22	22	1440	2280	IRT 1222-1	HK 1622	HK 1622	HK 1622	—
TLA 1712 Z	11.5	17	23	12	810	1110	—	HK 1712	HK 1712	HK 1712	FJV-1712
TLA 1812 Z	12	18	24	12	840	1180	IRT 1512	HK 1812	HK 1812	HK 1812	FJV-1812
TLA 1816 Z	16.2	18	24	16	1060	1590	IRT 1516	HK 1816	HK 1816	HK 1816	FJV-1816
TLA 2012 Z	13.2	20	26	12	890	1320	—	HK 2012	HK 2012	HK 2012	FJV-2012
TLA 2016 Z	17.8	20	26	16	1130	1780	IRT 1716	HK 2016	HK 2016	HK 2016	FJV-2016
TLA 2020 Z	22	20	26	20	1480	2520	IRT 1720	HK 2020	HK 2020	HK 2020	FJV-2020
TLA 2030 Z	33	20	26	30	2270	4380	IRT 1730	HK 2030	HK 2030	HK 2030	—
TLA 2212 Z	15.6	22	28	12	940	1450	—	HK 2212	HK 2212	HK 2212	FJV-2212
TLA 2216 Z	21.5	22	28	16	1190	1960	IRT 1716-2	HK 2216	HK 2216	HK 2216	FJV-2216
TLA 2220 Z	26.5	22	28	20	1560	2780	IRT 1720-2	HK 2220	HK 2220	HK 2220	—
TLA 2512 Z	19.7	25	32	12	960	1410	—	HK 2512	HK 2512	HK 2512	FJV-2512
TLA 2516 Z	26	25	32	16	1300	2090	—	HK 2516	HK 2516	HK 2516	FJV-2516
TLA 2520 Z	32	25	32	20	1720	2980	IRT 2020-1	HK 2520	HK 2520	HK 2520	FJV-2520
TLA 2526 Z	41.5	25	32	26	2300	4330	IRT 2026-1	HK 2526	HK 2526	HK 2526	—
TLAW 2538 Z	58.5	25	32	38	2950	5970	IRT 2038-1	HK 2538	HK 2538	HK 2538	—
TLA 2816 Z	28.5	28	35	16	1410	2390	—	HK 2816	HK 2816	HK 2816	FJV-2816
TLA 2820 Z	35.5	28	35	20	1860	3420	IRT 2220-1	HK 2820	HK 2820	HK 2820	FJV-2820
TLA 3012 Z	23.5	30	37	12	1060	1700	—	HK 3012	HK 3012	HK 3012	FJV-3012
TLA 3016 Z	30.5	30	37	16	1430	2500	—	HK 3016	HK 3016	HK 3016	FJV-3016
TLA 3018 Z	34.5	30	37	18	1670	3040	—	—	—	—	—
TLA 3020 Z	38	30	37	20	1890	3580	IRT 2520-1	HK 3020	HK 3020	HK 3020	FJV-3020
TLA 3026 Z	49	30	37	26	2530	5190	IRT 2526-1	HK 3026	HK 3026	HK 3026	—
TLAW 3038 Z	69	30	37	38	3250	7160	IRT 2538-1	HK 3038	HK 3038	HK 3038	—
TLA 3512 Z	27	35	42	12	1180	2050	IRT 3012	HK 3512	HK 3512	HK 3512	—
TLA 3516 Z	35	35	42	16	1600	3020	—	HK 3516	HK 3516	HK 3516	FJV-3516
TLA 3520 Z	43.5	35	42	20	2110	4320	IRT 3020	HK 3520	HK 3520	HK 3520	FJV-3520
TLA 4012 Z	30	40	47	12	1260	2330	—	HK 4012	HK 4012	HK 4012	FJV-4012
TLA 4016 Z	39	40	47	16	1700	3440	—	HK 4016	HK 4016	HK 4016	—
TLA 4020 Z	49	40	47	20	2250	4910	IRT 3520	HK 4020	HK 4020	HK 4020	FJ-4020
TLA 4516 Z	43.5	45	52	16	1810	3860	—	HK 4516	HK 4516	HK 4516	FJ-4516
TLA 4520 Z	54.5	45	52	20	2390	5510	IRT 4020	HK 4520	HK 4520	HK 4520	FJV-4520
TLA 5020 Z	69	50	58	20	2930	6540	IRT 4520	HK 5020	HK 5020	HK 5020	FJ-5020
TLA 5025 Z	86	50	58	25	3760	9010	IRT 4525	HK 5025	HK 5025	HK 5025	—
TLA 5520 Z	75	55	63	20	3040	7070	IRT 5020-1	HK 5520	HK 5520	—	FJ-5520
TLA 5525 Z	98.5	55	63	25	3910	9750	IRT 5025-1	—	—	—	—



TLA.:Z

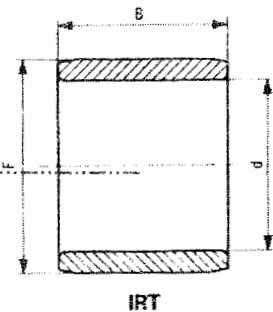
IKD**IRT****ANILLOS INTERIORES****INNER RACES FOR SHELL TYPE
NEEDLE ROLLER BEARINGS**

Metric Dimension

DIMENSION TABLE

INTERCHANGE TABLE

IKD NUMERO IRT	PESO (g)	DIMENSIONES (mm)			UTILIZABLE CON BALEROS NUMERO		INA	SKF	FAG
		d	F	B	TA	TLA	IR	IR	JR
IRT 2020-1	28	20	25	20.5	TA 2520 Z	TLA 2520 Z	IR 20×25×20.5	IR 20×25×20.5	JR 20×25×20.5
IRT 2025-1	34.5	20	25	25.5	TA 2525 Z	—	—	—	—
IRT 2026-1	36	20	25	26.5	—	TLA 2526 Z	IR 20×25×26.5	IR 20×25×26.5	JR 20×25×26.5
IRT 2030-1	41.5	20	25	30.5	TA 2530 Z	—	—	—	—
IRT 2038-1	52.5	20	25	38.5	—	TLAW 2538 Z	IR 20×25×38.5	IR 20×25×38.5	JR 20×25×38.5
IRT 2216	19.1	22	28	16.5	TA 2616 Z	—	—	—	—
IRT 2220	24	22	28	20.5	TA 2620 Z	—	—	—	—
IRT 2220-1	37	22	28	20.5	TA 2820 Z	TLA 2820 Z	IR 22×28×20.5	IR 22×28×20.5	JR 22×28×20.5
IRT 2230-1	55.5	22	28	30.5	TA 2830 Z	—	—	—	—
IRT 2520	26.5	25	29	20.5	TA 2920 Z	—	—	—	—
IRT 2530	40	25	29	30.5	TA 2930 Z	—	—	—	—
IRT 2515-1	25.5	25	30	15.5	TA 3015 Z	—	—	—	—
IRT 2520-1	34	25	30	20.5	TA 3020 Z	TLA 3020 Z	IR 25×30×20.5	IR 25×30×20.5	JR 25×30×20.5
IRT 2525-1	42.5	25	30	25.5	TA 3025 Z	—	—	—	—
IRT 2526-1	44	25	30	26.5	—	TLA 3026 Z	IR 25×30×26.5	IR 25×30×26.5	JR 25×30×26.5
IRT 2530-1	50.5	25	30	30.5	TA 3030 Z	—	—	—	—
IRT 2538-1	64	25	30	38.5	—	TLAW 3038 Z	IR 25×30×38.5	IR 25×30×38.5	JR 25×30×38.5
IRT 2820	29.5	28	32	20.5	TA 3220 Z	—	—	—	—
IRT 2830	44	28	32	30.5	TA 3230 Z	—	—	—	—
IRT 3012	24.5	30	35	12.5	TA 3512 Z	TLA 3512 Z	—	—	—
IRT 3015	30.5	30	35	15.5	TA 3515 Z	—	—	—	—
IRT 3020	40	30	35	20.5	TA 3520 Z	TLA 3520 Z	IR 30×35×20.5	IR 30×35×20.5	JR 30×35×20.5
IRT 3025	50	30	35	25.5	TA 3525 Z	—	—	—	—
IRT 3030	60	30	35	30.5	TA 3530 Z	—	—	—	—
IRT 3220	42.5	32	37	20.5	TA 3720 Z	—	—	—	—
IRT 3230	63.5	32	37	30.5	TA 3730 Z	—	—	—	—
IRT 3215-1	39.5	32	38	16.5	TA 3815 Z	—	—	—	—
IRT 3220-1	52	32	38	20.5	TA 3820 Z	—	—	—	—
IRT 3225-1	64.5	32	38	25.5	TA 3825 Z	—	—	—	—
IRT 3230-1	77.5	32	38	30.5	TA 3830 Z	—	—	—	—
IRT 3246-1	115	32	38	45.5	TAW 3846 Z	—	—	—	—
IRT 3515	35	35	40	15.5	TA 4015 Z	—	—	—	—
IRT 3520	46.5	35	40	20.5	TA 4020 Z	TLA 4020 Z	IR 35×40×20.5	IR 35×40×20.5	JR 35×40×20.5
IRT 3525	58	35	40	25.5	TA 4025 Z	—	—	—	—
IRT 3530	69	35	40	30.5	TA 4030 Z	—	—	—	—
IRT 3540	91.5	35	40	40.5	TA 4040 Z	—	—	—	—
IRT 4020	52.5	40	45	20.5	TA 4520 Z	TLA 4520 Z	IR 40×45×20.5	IR 40×45×20.5	JR 40×45×20.5
IRT 4025	65.5	40	45	25.5	TA 4525 Z	—	—	—	—
IRT 4030	78.5	40	45	30.5	TA 4530 Z	—	—	—	—
IRT 4040	104	40	45	40.5	TA 4540 Z	—	—	—	—
IRT 4512	36	45	50	12.5	TA 5012 Z	—	—	—	—
IRT 4515	44.5	45	50	15.5	TA 5015 Z	—	—	—	—
IRT 4520	59	45	50	20.5	TA 5020 Z	TLA 5020 Z	—	—	—
IRT 4525	73	45	50	25.5	TA 5025 Z	TLA 5025 Z	IR 45×50×25.5	IR 45×50×25.5	JR 45×50×25.5
IRT 4530	87.5	45	50	30.5	TA 5030 Z	—	—	—	—
IRT 4540	116	45	50	40.5	TA 5040 Z	—	—	—	—
IRT 4545	131	45	50	45.5	TAW 5045 Z	—	—	—	—
IRT 5020-1	65	50	55	20.5	TA 5520 Z	TLA 5520 Z	—	—	—
IRT 5025-1	81	50	55	25.5	TA 5525 Z	TLA 5525 Z	—	—	—
IRT 5030-1	98.5	50	55	30.5	TA 5530 Z	—	—	—	—
IRT 5040-1	128	50	55	40.5	TA 5540 Z	—	—	—	—
IRT 5045-1	144	50	55	45.5	TAW 5545 Z	—	—	—	—
IRT 5050-1	180	50	55	50.5	TAW 5550 Z	—	—	—	—
IRT 5025	169	50	60	25.5	TA 6025 Z	—	—	—	—
IRT 5030	205	50	60	30.5	TA 6030 Z	—	—	—	—
IRT 5040	270	50	60	40.5	TA 6040 Z	—	—	—	—
IRT 5045	300	50	60	45.5	TAW 6045 Z	—	—	—	—
IRT 5050	335	50	60	50.5	TAW 6050 Z	—	—	—	—
IRT 5212	86	52	62	12.5	TA 6212 Z	—	—	—	—
IRT 5525	185	55	65	25.5	TA 6525 Z	—	—	—	—
IRT 5530	220	55	65	30.5	TA 6530 Z	—	—	—	—
IRT 5545	330	55	65	45.5	TAW 6545 Z	—	—	—	—
IRT 5550	365	55	65	50.5	TAW 6550 Z	—	—	—	—
IRT 6025	200	60	70	25.5	TA 7025 Z	—	—	—	—
IRT 6030	240	60	70	30.5	TA 7030 Z	—	—	—	—
IRT 6040	320	60	70	40.5	TA 7040 Z	—	—	—	—
IRT 6050	395	60	70	50.5	TAW 7050 Z	—	—	—	—



IKO

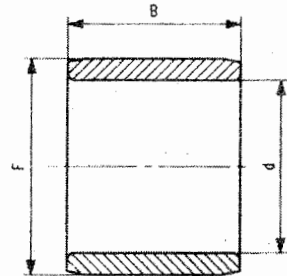
LRT

ANILLOS INTERIORES

INNER RACES FOR MACHINED TYPE
NEEDLE ROLLER BEARINGS

Metric Dimension

IKO NUMERO LRT	PESO (g)	DIMENSIONES (mm)			UTILIZABLE CON BALEROS NUMERO	INA	SKF	FAG
		d	F	B		IR	IR	JR
LRT 222817	30.5	22	28	17	RNA 49/22	IR 22 × 28 × 17	IR 22 × 28 × 17	JR 22 × 28 × 17
LRT 222830	55	22	28	30	RNA 69/22	IR 22 × 28 × 30	IR 22 × 28 × 30	JR 22 × 28 × 30
LRT 252920	25	25	29	20	TAF 293820	IR 25 × 29 × 20	IR 25 × 29 × 20	JR 25 × 29 × 20
LRT 252930	38	25	29	30	TAF 293830	IR 25 × 29 × 30	IR 25 × 29 × 30	JR 25 × 29 × 30
LRT 253016	28	25	30	16	RNAF 304216	IR 25 × 30 × 16	IR 25 × 30 × 16	JR 25 × 30 × 16
LRT 253017	28.5	25	30	17	RNA 4905 RNAF 304017 NAX 30 NBX 30	IR 25 × 30 × 17	IR 25 × 30 × 17	JR 25 × 30 × 17
LRT 253020	34	25	30	20.5	NAX 3030 NBX 3030	IR 25 × 30 × 20.5	IR 25 × 30 × 20.5	JR 25 × 30 × 20.5
LRT 253025	42	25	30	25.5	TR 304425	—	—	—
LRT 253026	44.5	25	30	26	RNAFW 304026	—	IR 25 × 30 × 26	JR 25 × 30 × 26
LRT 253030	49	25	30	30	RNA 6905	IR 25 × 30 × 30	IR 25 × 30 × 30	JR 25 × 30 × 30
LRT 253032	54	25	30	32	RNAFW 304232	IR 25 × 30 × 32	IR 25 × 30 × 32	JR 25 × 30 × 32
LRT 283217	24.5	28	32	17	RNA 49/28	IR 28 × 32 × 17	IR 28 × 32 × 17	JR 28 × 32 × 17
LRT 283220	28.5	28	32	20	TAF 324220	IR 28 × 32 × 20	IR 28 × 32 × 20	JR 28 × 32 × 20
LRT 283230	43	28	32	30	RNA 69/28 TAF 324230	IR 28 × 32 × 30	IR 28 × 32 × 30	JR 28 × 32 × 30
LRT 303516	31.5	30	35	16	RNAF 354716	IR 30 × 35 × 16	IR 30 × 35 × 16	JR 30 × 35 × 16
LRT 303517	33.5	30	35	17	RNA 4906 RNAF 354517 NAX 35 NBX 35	IR 30 × 35 × 17	IR 30 × 35 × 17	JR 30 × 35 × 17
LRT 303520	38.5	30	35	20	TAF 354520 NAX 3530 NBX 3530	IR 30 × 35 × 20	IR 30 × 35 × 20	JR 30 × 35 × 20
LRT 303526	52	30	35	26	RNAFW 354526	IR 30 × 35 × 26	IR 30 × 35 × 26	JR 30 × 35 × 26
LRT 303530	59	30	35	30	RNA 6906 TAF 354530	IR 30 × 35 × 30	IR 30 × 35 × 30	JR 30 × 35 × 30
LRT 303530-1	59	30	35	30.5	TR 354830	—	—	—
LRT 303532	64	30	35	32	RNAFW 354732	—	IR 30 × 35 × 32	JR 30 × 35 × 32
LRT 323720	43.5	32	37	20	TAF 374720	IR 32 × 37 × 20	IR 32 × 37 × 20	JR 32 × 37 × 20
LRT 323730	63	32	37	30	TAF 374730	IR 32 × 37 × 30	IR 32 × 37 × 30	JR 32 × 37 × 30
LRT 323830	77	32	38	30.5	TR 385230	—	—	—
LRT 324020	69	32	40	20	RNA 49/32	IR 32 × 40 × 20	IR 32 × 40 × 20	JR 32 × 40 × 20
LRT 324036	123	32	40	36	RNA 69/32	IR 32 × 40 × 36	IR 32 × 40 × 36	JR 32 × 40 × 36
LRT 354017	39	35	40	17	RNAF 405017	IR 35 × 40 × 17	IR 35 × 40 × 17	JR 35 × 40 × 17
LRT 354020	46	35	40	20	TAF 405020 RNAF 405520 NAX 4032 NBX 4032	IR 35 × 40 × 20	IR 35 × 40 × 20	JR 35 × 40 × 20
LRT 354030	67	35	40	30	TAF 405030	IR 35 × 40 × 30	IR 35 × 40 × 30	JR 35 × 40 × 30
LRT 354034	78	35	40	34	RNAFW 405034 NAX 40 NBX 40	—	IR 35 × 40 × 34	JR 35 × 40 × 34
LRT 354040	95	35	40	40	RNAFW 405540	—	IR 35 × 40 × 40	JR 35 × 40 × 40
LRT 354220	66	35	42	20	RNA 4907	IR 35 × 42 × 20	IR 35 × 42 × 20	JR 35 × 42 × 20
LRT 354230	97	35	42	30.5	TR 425630	—	—	—
LRT 354236	120	35	42	36	RNA 6907	IR 35 × 42 × 36	IR 35 × 42 × 36	JR 35 × 42 × 36
LRT 384320	47.5	38	43	20	TAF 435320	IR 38 × 43 × 20	IR 38 × 43 × 20	JR 38 × 43 × 20
LRT 384330	72	38	43	30	TAF 435330	IR 38 × 43 × 30	IR 38 × 43 × 30	JR 38 × 43 × 30
LRT 404517	44.5	40	45	17	RNAF 455517	IR 40 × 45 × 17	IR 40 × 45 × 17	JR 40 × 45 × 17
LRT 404520	51	40	45	20	TAF 455520 RNAF 456220 NAX 4532 NBX 4532	IR 40 × 45 × 20	IR 40 × 45 × 20	JR 40 × 45 × 20
LRT 404530	77	40	45	30	TAF 455530	IR 40 × 45 × 30	IR 40 × 45 × 30	JR 40 × 45 × 30
LRT 404530-1	77	40	45	30.5	TR 455930	—	—	—
LRT 404534	88	40	45	34	RNAFW 455534 NAX 45 NBX 45	—	IR 40 × 45 × 34	JR 40 × 45 × 34
LRT 404540	105	40	45	40	RNAFW 456240	—	IR 40 × 45 × 40	JR 40 × 45 × 40
LRT 404822	93	40	48	22	RNA 4908	IR 40 × 48 × 22	IR 40 × 48 × 22	JR 40 × 48 × 22
LRT 404840	165	40	48	40	RNA 6908	IR 40 × 48 × 40	IR 40 × 48 × 40	JR 40 × 48 × 40
LRT 424720	54	42	47	20	TAF 475720	IR 42 × 47 × 20	IR 42 × 47 × 20	JR 42 × 47 × 20
LRT 424730	81	42	47	30	TAF 475730	IR 42 × 47 × 30	IR 42 × 47 × 30	JR 42 × 47 × 30
LRT 424830	100	42	48	30.5	TR 486230	—	—	—
LRT 455020	58	45	50	20	RNAF 506220	—	IR 45 × 50 × 20	JR 45 × 50 × 20
LRT 455025	71	45	50	25	TAF 506225 NAX 5035 NBX 5035	IR 45 × 50 × 25	IR 45 × 50 × 25	JR 45 × 50 × 25
LRT 455030	90	45	50	30.5	TR 506430	—	—	—
LRT 455035	95	45	50	35	TAF 506235	IR 45 × 50 × 35	IR 45 × 50 × 35	JR 45 × 50 × 35
LRT 455040	115	45	50	40	RNAFW 506240 NAX 50 NBX 50	—	IR 45 × 50 × 40	JR 45 × 50 × 40
LRT 455222	88	45	52	22	RNA 4909	IR 45 × 52 × 22	IR 45 × 52 × 22	JR 45 × 52 × 22
LRT 455240	165	45	52	40	RNA 6909	IR 45 × 52 × 40	IR 45 × 52 × 40	JR 45 × 52 × 40
LRT 455520	120	45	55	20	RNAF 557220	IR 45 × 55 × 20	IR 45 × 55 × 20	JR 45 × 55 × 20



LRT

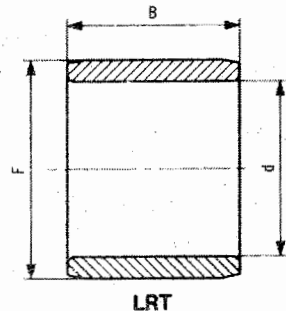


ANILLOS INTERIORES

INNER RACES FOR MACHINED TYPE
NEEDLE ROLLER BEARINGS

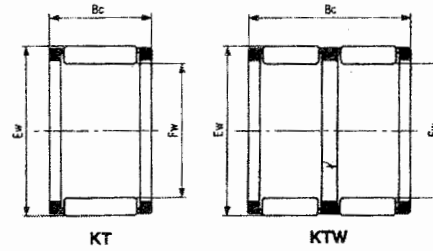
Metric Dimension

IKO NUMERO	PESO	DIMENSIONES (mm)			UTILIZABLE CON BALEROS NUMERO	INA	SKF	FAG
LRT	(g)	d	F	B		IR	IR	JR
LRT 8510063	1040	85	100	63	RNA 6917	IR 85 × 100 × 63	IR 85 × 100 × 63	JR 85 × 100 × 63
LRT 9010026	295	90	100	26	TAF 10012026	IR 90 × 100 × 26	IR 90 × 100 × 26	JR 90 × 100 × 26
LRT 9010030	355	90	100	30	RNAF 10012030	IR 90 × 100 × 30	IR 90 × 100 × 30	JR 90 × 100 × 30
LRT 9010036	415	90	100	36	TAF 10012036	IR 90 × 100 × 36	IR 90 × 100 × 36	JR 90 × 100 × 36
LRT 9010050	580	90	100	50.5	TR 10012550	—	—	—
LRT 9010535	610	90	105	35	RNA 4918	IR 90 × 105 × 35	IR 90 × 105 × 35	JR 90 × 105 × 35
LRT 9010563	1100	90	105	63	RNA 6918	IR 90 × 105 × 63	IR 90 × 105 × 63	JR 90 × 105 × 63
LRT 9510526	315	95	105	26	TAF 10512526	IR 95 × 105 × 26	IR 95 × 105 × 26	JR 95 × 105 × 26
LRT 9510536	430	95	105	36	TAF 10512536	IR 95 × 105 × 36	IR 95 × 105 × 36	JR 95 × 105 × 36
LRT 9511035	650	95	110	35	RNA 4919	IR 95 × 110 × 35	IR 95 × 110 × 35	JR 95 × 110 × 35
LRT 9511063	1160	95	110	63	RNA 6919	IR 95 × 110 × 63	IR 95 × 110 × 63	JR 95 × 110 × 63
LRT 10011030	380	100	110	30	TAF 11013030	IR 100 × 110 × 30	IR 100 × 110 × 30	JR 100 × 110 × 30
LRT 10011040	500	100	110	40	TAF 11013040	IR 100 × 110 × 40	IR 100 × 110 × 40	JR 100 × 110 × 40
LRT 10011050	640	100	110	50.5	TR 11013550	—	—	—
LRT 10011540	770	100	115	40	RNA 4920	IR 100 × 115 × 40	IR 100 × 115 × 40	JR 100 × 115 × 40
LRT 10511550	670	105	115	50.5	TR 11515350	—	—	—
LRT 11012030	410	110	120	30	RNA 4822	IR 110 × 120 × 30	IR 110 × 120 × 30	JR 110 × 120 × 30
LRT 11012540	840	110	125	40	RNA 4922	IR 110 × 125 × 40	IR 110 × 125 × 40	JR 110 × 125 × 40
LRT 12013030	450	120	130	30	RNA 4824	IR 120 × 130 × 30	IR 120 × 130 × 30	JR 120 × 130 × 30
LRT 12013545	1030	120	135	45	RNA 4924	IR 120 × 135 × 45	IR 120 × 135 × 45	JR 120 × 135 × 45
LRT 12514060	1460	125	140	60.5	TR 14017860	—	—	—
LRT 13014535	860	130	145	35	RNA 4826	IR 130 × 145 × 35	IR 130 × 145 × 35	JR 130 × 145 × 35
LRT 13015050	1670	130	150	50	RNA 4926	IR 130 × 150 × 50	IR 130 × 150 × 50	JR 130 × 150 × 50
LRT 13515060	1560	135	150	60.5	TR 15018860	—	—	—
LRT 14015535	930	140	155	35	RNA 4828	IR 140 × 155 × 35	IR 140 × 155 × 35	JR 140 × 155 × 35
LRT 14016050	1790	140	160	50	RNA 4928	IR 140 × 160 × 50	IR 140 × 160 × 50	JR 140 × 160 × 50
LRT 15016540	1130	150	165	40	RNA 4830	IR 150 × 165 × 40	IR 150 × 165 × 40	JR 150 × 165 × 40
LRT 15017060	2290	150	170	60	RNA 4930	—	—	—
LRT 16017540	1200	160	175	40	RNA 4832	IR 160 × 175 × 40	IR 160 × 175 × 40	JR 160 × 175 × 40
LRT 16018060	2440	160	180	60	RNA 4932	—	—	—
LRT 17018545	1420	170	185	45	RNA 4834	IR 170 × 185 × 45	IR 170 × 185 × 45	JR 170 × 185 × 45
LRT 17019060	2580	170	190	60	RNA 4934	—	—	—
LRT 18019545	1500	180	195	45	RNA 4836	IR 180 × 195 × 45	IR 180 × 195 × 45	JR 180 × 195 × 45
LRT 18020569	3950	180	205	69	RNA 4936	—	—	—
LRT 19021050	2380	190	210	50	RNA 4838	IR 190 × 210 × 50	IR 190 × 210 × 50	JR 190 × 210 × 50
LRT 19021569	4200	190	215	69	RNA 4938	—	—	—
LRT 20022050	2520	200	220	50	RNA 4840	IR 200 × 220 × 50	IR 200 × 220 × 50	JR 200 × 220 × 50
LRT 20022580	5000	200	225	80	RNA 4940	—	—	—
LRT 22024050	2750	220	240	50	RNA 4844	IR 220 × 240 × 50	IR 220 × 240 × 50	JR 220 × 240 × 50
LRT 22024580	5500	220	245	80	RNA 4944	—	—	—
LRT 24026560	4530	240	265	60	RNA 4848	IR 240 × 265 × 60	IR 240 × 265 × 60	JR 240 × 265 × 60
LRT 24026580	6000	240	265	80	RNA 4948	—	—	—
LRT 26028560	4930	260	285	60	RNA 4852	IR 260 × 285 × 60	IR 260 × 285 × 60	JR 260 × 285 × 60
LRT 260290100	9900	260	290	100	RNA 4952	—	—	—
LRT 28030569	6050	280	305	69	RNA 4856	IR 280 × 305 × 69	IR 280 × 305 × 69	JR 280 × 305 × 69
LRT 280310100	10600	280	310	100	RNA 4956	—	—	—
LRT 30033080	9100	300	330	80	RNA 4860	IR 300 × 330 × 80	IR 300 × 330 × 80	JR 300 × 330 × 80
LRT 300340118	18000	300	340	118	RNA 4960	—	—	—
LRT 32035080	9600	320	350	80	RNA 4864	IR 320 × 350 × 80	IR 320 × 350 × 80	JR 320 × 350 × 80
LRT 320360118	19200	320	360	118	RNA 4964	—	—	—
LRT 34037080	10200	340	370	80	RNA 4868	IR 340 × 370 × 80	IR 340 × 370 × 80	JR 340 × 370 × 80
LRT 340380118	20300	340	380	118	RNA 4968	—	—	—
LRT 36039020	10800	360	390	80	RNA 4872	IR 360 × 390 × 80	IR 360 × 390 × 80	JR 360 × 390 × 80
LRT 360400118	21500	360	400	118	RNA 4972	—	—	—
LRT 380415100	16700	380	415	100	RNA 4876	IR 380 × 415 × 100	IR 380 × 415 × 100	JR 380 × 415 × 100
LRT 380430140	33900	380	430	140	RNA 4976	—	—	—
LRT 400450140	35600	400	450	140	RNA 4980	—	—	—
LRT 420470140	37300	420	470	140	RNA 4984	—	—	—
LRT 440490160	44100	440	490	160	RNA 4988	—	—	—



IKO**KT****CORONAS DE AGUJAS****NEEDLE ROLLER CAGES**

Metric Dimension

**DIMENSION TABLE**

IKO NUMERO KT	PESO (g)	DIMENSIONES (mm)			CAP. DINAMICA DE CARGA BASICA (kgf)	CAP. ESTATICA DE CARGA BASICA (kgf)	INA	SKF	TORRINGTON	FAG
		Fw	Ew	Bc			K	K	FWJV	K
KT 141810	4.6	14	18	10	640	720	K 14×18×10	K 14×18×10	—	K 14×18×10
KT 141811	5.2	14	18	11	670	760	—	—	—	—
KT 141813	6	14	18	13	800	960	K 14×18×13	K 14×18×13	—	K 14×18×13
KT 141816	7.3	14	18	16	990	1270	—	—	—	K 14×18×16 CH
KT 141910	5.9	14	19	10	730	730	—	—	—	—
KT 141916	9.4	14	19	16	1130	1290	—	—	—	—
KT 141918	10.5	14	19	18	1270	1500	—	—	—	K 14×19×18 F
KT 142012	8.7	14	20	12	1000	990	K 14×20×12	K 14×20×12	—	K 14×20×12
KT 142017	12.4	14	20	17	1360	1470	—	—	—	—
KT 15199	4.4	15	19	9	620	710	—	—	—	—
KT 151910	4.9	15	19	10	680	790	K 15×19×10	K 15×19×10	—	K 15×19×10
KT 151911	5.5	15	19	11	700	820	—	—	—	K 15×19×11
KT 151913	6.4	15	19	13	840	1040	K 15×19×13	K 15×19×13	—	K 15×19×13
KT 151917	8.2	15	19	17	1110	1480	K 15×19×17	K 15×19×17	—	K 15×19×17
KT 151918	8.7	15	19	18	1170	1600	—	—	—	—
KT 152010	6.3	15	20	10	770	810	—	—	—	—
KT 152115	11.9	15	21	15	1280	1380	K 15×21×15	K 15×21×15	—	K 15×21×15 F
KT 162010	5.2	16	20	10	710	850	K 16×20×10	K 16×20×10	—	K 16×20×10
KT 162013	6.8	16	20	13	880	1120	K 16×20×13	K 16×20×13	FWJV-162013	K 16×20×13
KT 162016	8.3	16	20	16	1090	1480	—	—	—	—
KT 162017	8.7	16	20	17	1160	1600	K 16×20×17	K 16×20×17	—	K 16×20×17 F
KT 162118	12	16	21	18	1420	1810	—	—	—	—
KT 162120	13.6	16	21	20	1500	1930	—	—	—	—
KT 162125	16.6	16	21	25	1870	2560	—	—	—	—
KT 162212	9.7	16	22	12	1070	1110	K 16×22×12	K 16×22×12	—	K 16×22×12 F
KT 162214	11.5	16	22	14	1190	1270	—	—	—	—
KT 162217	13.8	16	22	17	1450	1640	—	—	—	—
KT 162220	16.5	16	22	20	1620	1890	K 16×22×20	K 16×22×20	—	K 16×22×20 F
KT 162420	23.5	16	24	20	1880	1940	K 16×24×20	K 16×24×20	—	K 16×24×20 F
KT 172110	5.5	17	21	10	740	910	K 17×21×10	K 17×21×10	—	K 17×21×10
KT 172113	7.2	17	21	13	920	1210	K 17×21×13	K 17×21×13	—	K 17×21×13
KT 172115	8.2	17	21	15	1060	1470	—	K 17×21×15	—	K 17×21×15
KT 172117	9.3	17	21	17	1210	1720	K 17×21×17	K 17×21×17	—	K 17×21×17 F
KT 172220	14	17	22	20	1580	2100	—	K 17×22×20	—	K 17×22×20 F
KT 172311	9.6	17	23	11	1030	1070	—	—	—	—
KT 172315	13.1	17	23	15	1360	1540	—	K 17×23×15	—	K 17×23×15 F
KT 172418	18.6	17	24	18	1680	1840	—	—	—	—
KT 18228	4.7	18	22	8	620	740	—	—	—	K 18×22×8 F
KT 182210	5.8	18	22	10	760	970	K 18×22×10	K 18×22×10	—	K 18×22×10
KT 182213	7.6	18	22	13	950	1290	K 18×22×13	K 18×22×13	FWJV-182213	K 18×22×13 H

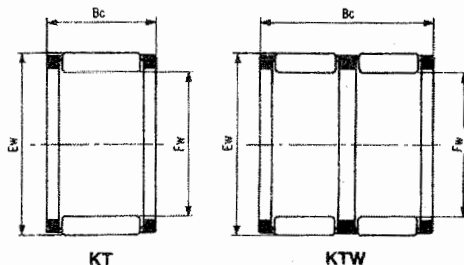
IKO

KT

CORONA DE AGUJAS

NEEDLE ROLLER CAGES

Metric Dimension



KT

KTW

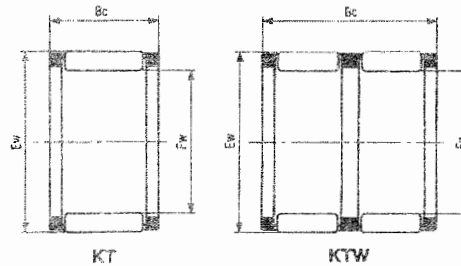
DIMENSION TABLE

INTERCHANGE TABLE

IKO NUMERO KT	PESO (g)	DIMENSIONES (mm)			CAP. DINAMICA DE CARGA BASICA (kgf)	CAP. ESTATICA DE CARGA BASICA (kgf)	INA	SKF	TORRINGTON	FAG
		Fw	Ew	Bc			K	K	FWJV	K
KT 222920	28.5	22	29	20	2130	2660	—	—	—	—
KT 223015	23.5	22	30	15	1830	2000	K 22 × 30 × 15 TN	K 22 × 30 × 15 TN	—	K 22 × 30 × 15 H
KT 223230	52.5	22	32	30	3710	4360	—	—	—	K 22 × 32 × 30 H
KT 223232	56	22	32	32	3950	4720	—	—	—	—
KT 232824	22	23	28	24	2200	3520	—	K 23 × 28 × 24	—	K 23 × 28 × 24 F
KT 232913	15.1	23	29	13	1410	1750	—	—	—	—
KT 233015	21	23	30	15	1770	2120	—	—	—	—
KT 233016	22	23	30	16	1890	2310	—	—	—	—
KT 242813	9.9	24	28	13	1100	1710	K 24 × 28 × 13	K 24 × 28 × 13	—	K 24 × 28 × 13 H
KT 242816	12	24	28	16	1370	2260	—	K 24 × 28 × 16	—	K 24 × 28 × 16 F
KTW 242834	27	24	28	34	2200	4150	—	—	—	—
KT 242913	12.8	24	29	13	1290	1800	K 24 × 29 × 13	—	—	—
KT 243020	23.5	24	30	20	2070	2910	—	—	—	—
KT 252910	7.9	25	29	10	910	1360	K 25 × 29 × 10	K 25 × 29 × 10	—	K 25 × 29 × 10 H
KT 252913	10.3	25	29	13	1130	1790	K 25 × 29 × 13	K 25 × 29 × 13	FWJV-252913	K 25 × 29 × 13 F
KT 253013	13.3	25	30	13	1330	1900	K 25 × 30 × 13	K 25 × 30 × 13	—	K 25 × 30 × 13
KT 253016	16.2	25	30	16	1660	2510	—	—	—	—
KT 253017	17.1	25	30	17	1760	2710	—	K 25 × 30 × 17	—	K 25 × 30 × 17 H
KT 253020	20	25	30	20	1890	2960	K 25 × 30 × 20	K 25 × 30 × 20	FWJV-253020	K 25 × 30 × 20 F
KT 253113	16.2	25	31	13	1460	1880	—	—	—	—
KT 253116	19.6	25	31	16	1820	2490	—	—	—	—
KT 253117	20.5	25	31	17	1930	2700	K 25 × 31 × 17	K 25 × 31 × 17	—	K 25 × 31 × 17
KT 253120	25	25	31	20	2160	3110	—	K 25 × 31 × 20	—	K 25 × 31 × 20 H
KT 253216	23.5	25	32	16	1980	2500	K 25 × 32 × 16	K 25 × 32 × 16	—	K 25 × 32 × 16
KT 253224	35	25	32	24	2820	3950	—	—	—	—
KT 253515	33	25	35	15	2300	2430	—	—	—	—
KT 253525	48	25	35	25	3320	3870	—	—	—	K 25 × 35 × 25 H
KT 253530	58	25	35	30	3980	4900	K 25 × 35 × 30	K 25 × 35 × 30	—	K 25 × 35 × 30
KT 263013	10.7	26	30	13	1160	1880	K 26 × 30 × 13	K 26 × 30 × 13	—	K 26 × 30 × 13 F
KT 263832	79.5	26	38	32	4810	5640	—	—	—	—
KT 283313	14.8	28	33	13	1410	2110	K 28 × 33 × 13	K 28 × 33 × 13	—	K 28 × 33 × 13 F
KT 283317	18.9	28	33	17	1860	3010	K 28 × 33 × 17	K 28 × 33 × 17	FWJV-283317	K 28 × 33 × 17
KT 283327	29	28	33	27	2690	4820	K 28 × 33 × 27 TN	K 28 × 33 × 27 TN	FWJV-283327	K 28 × 33 × 27 H
KT 283417	23	28	34	17	2070	3050	K 28 × 34 × 17	K 28 × 34 × 17	—	K 28 × 34 × 17
KT 283516	26	28	35	16	2050	2700	K 28 × 35 × 16	K 28 × 35 × 16	—	K 28 × 35 × 16 F
KT 283528	44.5	28	35	28	3390	5160	—	—	—	—
KT 283620	38.5	28	36	20	2700	3530	—	K 28 × 36 × 20	—	K 28 × 36 × 20 FV
KT 284138	110	28	41	38	5980	7240	—	—	—	—
KT 303513	15.6	30	35	13	1440	2210	K 30 × 35 × 13	K 30 × 35 × 13	—	K 30 × 35 × 13 H
KT 303516	18.9	30	35	16	1790	2930	—	—	—	—

IKO**CORONA DE AGUJAS****KT****NEEDLE ROLLER CAGES**

Metric Dimension



KT

KTW

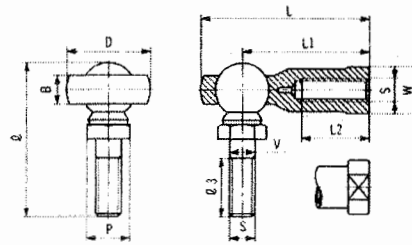
DIMENSION TABLE

INTERCHANGE TABLE

IKO NUMERO	PESO	DIMENSIONES (mm)			CAP. DINAMICA DE CARGA BASICA (kgf)	CAP. ESTATICA DE CARGA BASICA (kgf)	INA	SKF	TORRINGTON	FAG
KT	(g)	Fw	Ew	Bc	(kgf)	(kgf)	K	K	FWJV	K
KT 404527	41	40	45	27	3300	7060	K 40 × 45 × 27	K 40 × 45 × 27	FWJV-404527	K 40 × 45 × 27 H
KT 404817	44	40	48	17	2870	4240	—	—	—	—
KT 404820	52.5	40	48	20	3210	4890	K 40 × 48 × 20	K 40 × 48 × 20	FWJV-404820	K 40 × 48 × 20 F
KT 404825	64.5	40	48	25	4010	6530	—	—	—	—
KT 404834	87.5	40	48	34	5210	9140	—	—	—	—
KT 405015	48.5	40	50	15	2880	3660	—	—	—	—
KT 405017	56.5	40	50	17	3080	4000	—	—	—	—
KT 405020	61	40	50	20	3540	4950	—	—	—	—
KTW 405238	158	40	52	38	6820	9490	—	—	—	—
KT 405432	144	40	54	32	6820	9880	—	—	—	—
KT 405450	215	40	54	50	9540	13800	—	—	—	—
KT 405463	270	40	54	63	11700	17800	—	—	—	—
KT 414835	78.5	41	48	35	4880	9250	—	—	—	—
KT 424717	27.5	42	47	17	2290	4500	K 42 × 47 × 17	K 42 × 47 × 17	FWJV-424717	K 42 × 47 × 17 F
KT 424815	30	42	48	15	2280	3940	—	—	—	—
KT 424816	32	42	48	16	2440	4290	—	—	—	—
KT 425020	55	42	50	20	3300	5170	K 42 × 50 × 20	K 42 × 50 × 20	—	K 42 × 50 × 20 F
KT 425030	80.5	42	50	30	4910	8610	—	—	—	—
KT 455017	29.5	45	50	17	2370	4810	K 45 × 50 × 17	K 45 × 50 × 17	FWJV-455017	K 45 × 50 × 17 H
KT 455027	46	45	50	27	3550	8060	K 45 × 50 × 27	K 45 × 50 × 27	FWJV-455027	K 45 × 50 × 27 F
KT 455320	58	45	53	20	3390	5440	K 45 × 53 × 20	K 45 × 53 × 20	—	K 45 × 53 × 20 H
KT 455325	71.5	45	53	25	4240	7250	—	—	—	K 45 × 53 × 25 F
KT 455330	86	45	53	30	4880	8700	—	—	—	—
KT 455335	101	45	53	35	5500	10200	—	—	—	—
KT 455527	90.5	45	55	27	5140	7980	—	—	—	—
KT 485320	37	48	53	20	2730	5870	—	—	—	—
KT 485420	46	48	54	20	3130	6160	—	—	—	—
KT 505520	38.5	50	55	20	2780	6050	K 50 × 55 × 20	K 50 × 55 × 20	FWJV-505520	K 50 × 55 × 20 H
KT 505527	50.5	50	55	27	3630	8580	—	—	—	—
KT 505820	65	50	58	20	3680	6230	K 50 × 58 × 20	K 50 × 58 × 20	—	K 50 × 58 × 20 H
KT 505825	80	50	58	25	4580	8300	K 50 × 58 × 25	K 50 × 58 × 25	—	K 50 × 58 × 25 H
KT 505830	96.5	50	58	30	5270	9960	—	—	—	—
KT 505835	113	50	58	35	5940	11800	—	K 50 × 58 × 35	—	K 50 × 58 × 35 H
KT 525817	41	52	58	17	2890	5710	—	—	—	—
KT 526024	80	52	60	24	4490	8240	—	K 52 × 60 × 24	—	K 52 × 60 × 24
KT 556020	42.5	55	60	20	2910	6730	K 55 × 60 × 20	K 55 × 60 × 20	FWJV-556020	K 55 × 60 × 20 H
KT 556027	55.5	55	60	27	3840	9570	K 55 × 60 × 27	—	—	—
KT 556120	52	55	61	20	3330	6980	—	—	—	—
KT 556315	52.5	55	63	15	3000	4970	K 55 × 63 × 15	K 55 × 63 × 15	—	K 55 × 63 × 15 F
KT 556320	71	55	63	20	3810	6770	K 55 × 63 × 20	K 55 × 63 × 20	—	K 55 × 63 × 20



**CABEZA DE ROTULA
CON PERNO**
"L-BALL" ROD ENDS
Metric Dimension

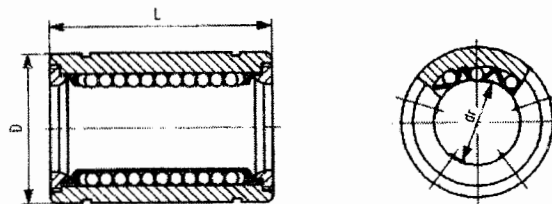


DIMENSION TABLE

IKO NUMERO LHS	PESO (g)	ROSCA S	DIMENSIONES (mm)										CAP. ESTÁTICA DE CARGA BÁSICA (kgf)
			V	D	B	L	L1	L2	W	I	P	I3	
LHS 5	22	M5 × 0.8	5	17	6	35.5	27	16	9	30.5	8	11	210
LHS 6	32	M6 × 1	6	19.5	6.75	39.7	30	18	11	36.5	10	14	330
LHS 8	60	M8 × 1.25	8	24	9	48	36	19	14	44	11	15	490
LHS 10	102	M10 × 1.5	10	28	10.5	57	43	23	17	52.5	13	18	770
LHS 12	160	M12 × 1.75	12	32	12	66	50	27	19	61	17	20	1260
LHS 14	227	M14 × 2	14	36	13.5	75	57	30	22	69	17	22	1490
LHS 16	300	M16 × 2	16	40	15	84	64	36	22	74	19	23	1990
LHS 18	445	M18 × 1.5	18	45	16.5	93.5	71	40	27	84	22	25	2610
LHS 20	580	M20 × 1.5	20	49	18	101.5	77	43	30	90.5	24	27	3210
LHS 22	765	M22 × 1.5	22	54	20	111	84	47	32	99	27	30	4050



CASQUILLO DE BOLAS
LINEAR BUSHINGS
Inch Dimension



LMB

DIMENSION TABLE

INTERCHANGE TABLE

IKO NUMERO LMB	NUMERO DE BOLAS DEL CIRCUITO	PESO (g)	DIMENSIONES						CAP. DINÁMICA DE CARGA BÁSICA (kgf)		CAP. ESTÁTICA DE CARGA BÁSICA (kgf)		THOMSON	HEIM	SCHNEEBERGER
			dr pulg	mm	D pulg	mm	L pulg	mm	NORMAL	MAX.	NORMAL	MAX.	A	LBB	
LMB 4812	3	9.1	¼	6.350	½	12.700	¾	19.050	7	7	13	13	A-4812	—	4812
LMB 4812 N	4	8.5	¼	6.350	½	12.700	¾	19.050	8	8	16	16	—	LBB-250	—
LMB 61014	4	27.5	¾	9.525	⅝	15.875	⅞	22.225	9	12	14	20	A-61014	—	61014
LMB 61014 N	4	12.5	¾	9.525	⅝	15.875	⅞	22.225	11	15	20	28	—	LBB-375	—
LMB 81420	4	44	½	12.700	¾	22.225	1¼	31.750	27	38	49	70	A-81420	—	81420
LMB 81420 N	4	40	½	12.700	¾	22.225	1¼	31.750	27	38	49	70	—	LBB-500	—
LMB 101824	4	85	⅝	15.875	1⅞	28.575	1½	38.100	43	61	74	100	A-101824	—	101824
LMB 101824 N	4	76	⅝	15.875	1⅞	28.575	1½	38.100	43	61	74	100	—	LBB-625	—
LMB 122026	5	98	¾	19.050	1¼	31.750	1⅝	41.275	57	83	99	140	A-122026	—	122026
LMB 122026 N	5	95	¾	19.050	1¼	31.750	1⅝	41.275	57	83	99	140	—	LBB-750	—
LMB 162536	6	220	1	25.400	1⅞	39.688	2¼	57.150	89	110	160	210	A-162536	—	162536
LMB 162536 N	6	200	1	25.400	1⅞	39.688	2¼	57.150	89	110	160	210	—	LBB-1000	—
LMB 203242	6	490	1¼	31.750	2	50.800	2⅝	66.675	140	180	250	320	A-203242	—	203242
LMB 203242 N	6	440	1¼	31.750	2	50.800	2⅝	66.675	140	180	250	320	—	LBB-1250	—
LMB 243848	6	730	1½	38.100	2⅝	60.325	3	76.200	210	270	360	460	A-243848	—	243848
LMB 243848 N	6	670	1½	38.100	2⅝	60.325	3	76.200	210	270	360	460	—	LBB-1500	—
LMB 324864	6	1530	2	50.800	3	76.200	4	101.600	380	490	640	820	A-324864	—	324864
LMB 324864 N	6	1140	2	50.800	3	76.200	4	101.600	380	490	640	820	—	LBB-2000	—
LMB 406080	6	2400	2½	63.500	3¾	95.250	5	127.000	540	690	910	1170	A-406080	—	406080
LMB 487296	6	4400	3	76.200	4½	114.300	6	152.400	890	1150	1450	1850	A-487296	—	487296
LMB 6496128	6	11000	4	101.600	6	152.400	8	203.200	1760	2260	2860	3660	A-6496128	—	6496128

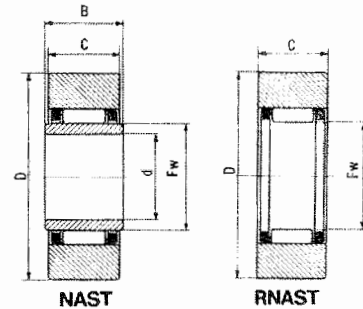
IKO

NAST·RNAS

RODAMIENTO DE AGUJAS

ROLLER FOLLOWERS

Metric Dimension



NAST

RNAS

DIMENSION TABLE

IKO NUMERO	PESO	IKO NUMERO	PESO	DIMENSIONES mm					CAP. DINAMICA DE CARGA BASICA (kgf)	CAP. ESTATICA DE CARGA BASICA (kgf)	INA		SKF		FAG	
NAST	(g)	RNAS	(g)	d	Fw	D	c	B			STO..X	RSTO..X	STO..X	RSTO..X	STO..DZ	RSTO..DZ
---	---	RNAS 5	8.9	---	7	18	7.8	---	280	240	---	RSTO 5 TNX	---	RSTO 5 XTN	---	RSTO 5 DZ TN
NAST 6	17.8	RNAS 6	13.9	6	10	19	9.8	10	420	460	STO 6 TNX	RSTO 6 TNX	STO 6 XTN	RSTO 6 XTN	STO 6 DZ	RSTO 6 DZ
NAST 8	28	RNAS 8	23.5	8	12	24	9.8	10	580	600	STO 8 TNX	RSTO 8 TNX	STO 8 XTN	RSTO 8 XTN	STO 8 DZ	RSTO 8 DZ
NAST 10	49.5	RNAS 10	42.5	10	14	30	11.8	12	1000	990	STO 10 X	RSTO 10 X	STO 10 X	RSTO 10 X	STO 10 DZ	RSTO 10 DZ
NAST 12	58	RNAS 12	49.5	12	16	32	11.8	12	1070	1110	STO 12 X	RSTO 12 X	STO 12 X	RSTO 12 X	STO 12 DZ	RSTO 12 DZ
NAST 15	62	RNAS 15	50	15	20	35	11.8	12	1260	1460	STO 15 X	RSTO 15 X	STO 15 X	RSTO 15 X	STO 15 DZ	RSTO 15 DZ
NAST 17	109	RNAS 17	90	17	22	40	15.8	16	1790	2130	STO 17 X	RSTO 17 X	STO 17 X	RSTO 17 X	STO 17 DZ	RSTO 17 DZ
NAST 20	157	RNAS 20	135	20	25	47	15.8	16	1980	2500	STO 20 X	RSTO 20 X	STO 20 X	RSTO 20 X	STO 20 DZ	RSTO 20 DZ
NAST 25	180	RNAS 25	152	25	30	52	15.8	16	2120	2890	STO 25 X	RSTO 25 X	STO 25 X	RSTO 25 X	STO 25 DZ	RSTO 25 DZ
NAST 30	320	RNAS 30	255	30	38	62	19.8	20	3110	4630	STO 30 X	RSTO 30 X	STO 30 X	RSTO 30 X	STO 30 DZ	RSTO 30 DZ
NAST 35	440	RNAS 35	375	35	42	72	19.8	20	3300	5170	STO 35 X	RSTO 35 X	STO 35 X	RSTO 35 X	STO 35 DZ	RSTO 35 DZ
NAST 40	530	RNAS 40	420	40	50	80	19.8	20	3660	6230	STO 40 X	RSTO 40 X	STO 40 X	RSTO 40 X	STO 40 DZ	RSTO 40 DZ
NAST 45	580	RNAS 45	460	45	55	85	19.8	20	3810	6770	STO 45 X	RSTO 45 X	STO 45 X	RSTO 45 X	STO 45 DZ	RSTO 45 DZ
NAST 50	635	RNAS 50	500	50	60	90	19.8	20	3970	7310	STO 50 X	RSTO 50 X	STO 50 X	RSTO 50 X	STO 50 DZ	RSTO 50 DZ

INTERCHANGE TABLE

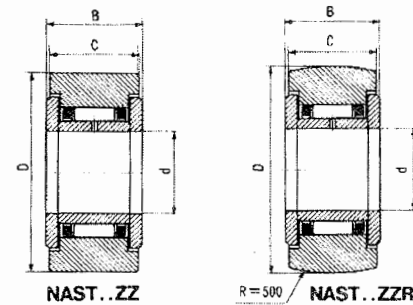
IKO

NAST..ZZ

RODAMIENTO DE AGUJAS

ROLLER FOLLOWERS

Metric Dimension



NAST..ZZ

R=500 NAST..ZZR

DIMENSION TABLE

IKO NUMERO	IKO NUMERO	PESO	DIMENSIONES (mm)					CAP. DINAMICA DE CARGA BASICA (kgf)	CAP. ESTATICA DE CARGA BASICA (kgf)	SKF		FAG	
NAST..ZZ	NAST..ZZR	(g)	d	D	C	B				NAST..P-ZZ	NAST..ZZ	STO..ZZ.DZ	STO..ZZ
NAST 6 ZZ	NAST 6 ZZR	24.5	6	19	13.8	14		420	460	NAST 6 P-ZZ	NAST 6-ZZ	STO 6 ZZ.DZ	STO 6 ZZ
NAST 8 ZZ	NAST 8 ZZR	39	8	24	13.8	14		580	600	NAST 8 P-ZZ	NAST 8-ZZ	STO 8 ZZ.DZ	STO 8 ZZ
NAST 10 ZZ	NAST 10 ZZR	65	10	30	15.8	16		1000	990	NAST 10 P-ZZ	NAST 10-ZZ	STO 10 ZZ.DZ	STO 10 ZZ
NAST 12 ZZ	NAST 12 ZZR	75	12	32	15.8	16		1070	1110	NAST 12 P-ZZ	NAST 12-ZZ	STO 12 ZZ.DZ	STO 12 ZZ
NAST 15 ZZ	NAST 15 ZZR	83	15	35	15.8	16		1260	1460	NAST 15 P-ZZ	NAST 15-ZZ	STO 15 ZZ.DZ	STO 15 ZZ
NAST 17 ZZ	NAST 17 ZZR	135	17	40	19.8	20		1790	2130	NAST 17 P-ZZ	NAST 17-ZZ	STO 17 ZZ.DZ	STO 17 ZZ
NAST 20 ZZ	NAST 20 ZZR	195	20	47	19.8	20		1980	2500	NAST 20 P-ZZ	NAST 20-ZZ	STO 20 ZZ.DZ	STO 20 ZZ
NAST 25 ZZ	NAST 25 ZZR	225	25	52	19.8	20		2120	2890	NAST 25 P-ZZ	NAST 25-ZZ	STO 25 ZZ.DZ	STO 25 ZZ
NAST 30 ZZ	NAST 30 ZZR	400	30	62	24.8	25		3110	4630	NAST 30 P-ZZ	NAST 30-ZZ	STO 30 ZZ.DZ	STO 30 ZZ
NAST 35 ZZ	NAST 35 ZZR	550	35	72	24.8	25		3300	5170	NAST 35 P-ZZ	NAST 35-ZZ	STO 35 ZZ.DZ	STO 35 ZZ
NAST 40 ZZ	NAST 40 ZZR	710	40	80	25.8	26		3660	6230	NAST 40 P-ZZ	NAST 40-ZZ	STO 40 ZZ.DZ	STO 40 ZZ
NAST 45 ZZ	NAST 45 ZZR	760	45	85	25.8	26		3810	6770	NAST 45 P-ZZ	NAST 45-ZZ	STO 45 ZZ.DZ	STO 45 ZZ
NAST 50 ZZ	NAST 50 ZZR	830	50	90	25.8	26		3970	7310	---	---	---	---

INTERCHANGE TABLE

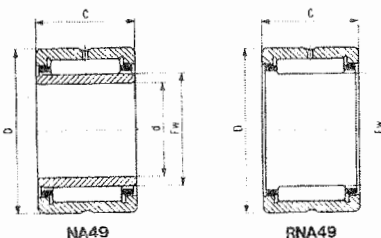
IKO

NA49 RNA49

RODAMIENTO DE AGUJAS

MACHINED TYPE
NEEDLE ROLLER BEARINGS

Metric Dimension



NA49

RNA49

DIMENSION TABLE

INTERCHANGE TABLE

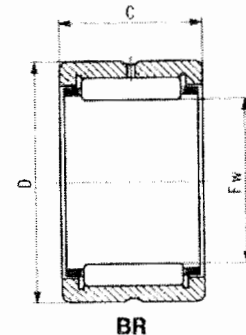
IKO NUMERO	PESO	IKO NUMERO	PESO	DIMENSIONES mm				CAP DINAMICA DE CARGA BASICA (kgf)	CAP ESTATICA DE CARGA BASICA (kgf)	INA		SKF		FAG	
NA49	(g)	RNA49	(g)	d	Fw	D	C			NA	RNA	NA	RNA	NA	RNA
—	—	RNA 493	4.6	—	5	11	10	250	200	—	—	—	—	—	—
—	—	RNA 494	5.3	—	6	12	10	280	240	—	NK 6 10 TN	—	—	—	NK 6 10
NA 495	7.3	RNA 495	5.9	5	7	13	10	300	270	—	—	—	—	—	—
NA 496	9.1	RNA 496	7.4	6	8	15	10	400	350	—	—	—	—	—	—
NA 497	11.2	RNA 497	9.3	7	9	17	10	460	370	—	—	—	—	—	—
NA 498	15	RNA 498	12.6	8	10	19	11	630	510	—	—	—	—	—	—
NA 499	16.7	RNA 499	13.6	9	12	20	11	670	640	—	—	—	—	—	—
NA 4900	24	RNA 4900	16.5	10	14	22	13	940	1030	NA 4900	RNA 4900	NA 4900	RNA 4900	NA 4900	RNA 4900
NA 4901	26.5	RNA 4901	18.1	12	16	24	13	990	1130	NA 4901	RNA 4901	NA 4901	RNA 4901	NA 4901	RNA 4901
—	—	RNA 49/14	19.9	—	18	26	13	1080	1310	—	—	—	—	—	—
NA 4902	35	RNA 4902	21.5	15	20	28	13	1110	1410	NA 4902	RNA 4902	NA 4902	RNA 4902	NA 4902	RNA 4902
NA 4903	39	RNA 4903	23.5	17	22	30	13	1200	1590	NA 4903	RNA 4903	NA 4903	RNA 4903	NA 4903	RNA 4903
NA 4904	78.5	RNA 4904	55.5	20	25	37	17	2140	2550	NA 4904	RNA 4904	NA 4904	RNA 4904	NA 4904	RNA 4904
NA 49/22	87	RNA 49/22	56.5	22	28	39	17	2180	2940	NA 49 22	RNA 49 22	NA 49 22	RNA 49 22	NA 49 22	RNA 49 22
NA 4905	92.5	RNA 4905	64	25	30	42	17	2420	3130	NA 4905	RNA 4905	NA 4905	RNA 4905	NA 4905	RNA 4905
NA 49/28	101	RNA 49/28	76.5	28	32	45	17	2500	3330	NA 49 28	RNA 49 28	NA 49 28	RNA 49 28	NA 49 28	RNA 49 28
NA 4906	106	RNA 4906	72.5	30	35	47	17	2570	3540	NA 4906	RNA 4906	NA 4906	RNA 4906	NA 4906	RNA 4906
NA 49/32	165	RNA 49/32	96	32	40	52	20	3190	4880	NA 49 32	RNA 49 32	NA 49 32	RNA 49 32	NA 49 32	RNA 49 32
NA 4907	178	RNA 4907	113	35	42	55	20	3260	5120	NA 4907	RNA 4907	NA 4907	RNA 4907	NA 4907	RNA 4907
—	—	RNA 49/38	120	—	45	58	20	3430	5570	—	—	—	—	—	—
NA 4908	245	RNA 4908	152	40	48	62	22	4240	6870	NA 4908	RNA 4908	NA 4908	RNA 4908	NA 4908	RNA 4908
—	—	RNA 49/42	174	—	50	65	22	4340	7160	—	NKS 50	—	NKS 50	—	NKS 50 A
NA 4909	285	RNA 4909	197	45	52	68	22	4440	7480	NA 4909	RNA 4909	NA 4909	RNA 4909	NA 4909	RNA 4909
—	—	RNA 49/48	188	—	55	70	22	4510	7790	—	—	—	—	—	—
NA 4910	295	RNA 4910	179	50	58	72	22	4710	8370	NA 4910	RNA 4910	NA 4910	RNA 4910	NA 4910	RNA 4910
—	—	RNA 49/52	205	—	60	75	22	4800	8670	—	—	—	—	—	—
NA 4911	410	RNA 4911	265	55	63	80	25	5870	9920	NA 4911	RNA 4911	NA 4911	RNA 4911	NA 4911	RNA 4911
—	—	RNA 49/58	275	—	65	82	25	6010	10300	—	—	—	—	—	—
NA 4912	440	RNA 4912	285	60	68	85	25	6130	10700	NA 4912	RNA 4912	NA 4912	RNA 4912	NA 4912	RNA 4912
—	—	RNA 49/62	320	—	70	88	25	6270	11100	—	—	—	—	—	—
NA 4913	470	RNA 4913	325	65	72	90	25	6400	11800	NA 4913	RNA 4913	NA 4913	RNA 4913	NA 4913	RNA 4913
—	—	RNA 49/68	470	—	75	95	30	8150	15000	—	—	—	—	—	—
NA 4914	765	RNA 4914	495	70	80	100	30	8480	16100	NA 4914	RNA 4914	NA 4914	RNA 4914	NA 4914	RNA 4914
NA 4915	810	RNA 4915	525	75	85	105	30	8790	17300	NA 4915	RNA 4915	NA 4915	RNA 4915	NA 4915	RNA 4915
NA 4916	855	RNA 4916	550	80	90	110	30	8910	17800	NA 4916	RNA 4916	NA 4916	RNA 4916	NA 4916	RNA 4916
—	—	RNA 49/82	575	—	95	115	30	9180	19000	—	—	—	—	—	—
NA 4917	1280	RNA 4917	705	85	100	120	35	11200	24900	NA 4917	RNA 4917	NA 4917	RNA 4917	NA 4917	RNA 4917
NA 4918	1350	RNA 4918	740	90	105	125	35	11500	26300	NA 4918	RNA 4918	NA 4918	RNA 4918	NA 4918	RNA 4918
NA 4919	1420	RNA 4919	770	95	110	130	35	11900	27600	NA 4919	RNA 4919	NA 4919	RNA 4919	NA 4919	RNA 4919
NA 4920	1960	RNA 4920	1190	100	115	140	40	14800	33500	NA 4920	RNA 4920	NA 4920	RNA 4920	NA 4920	RNA 4920
NA 4922	2120	RNA 4922	1280	110	125	150	40	15500	36400	NA 4922	RNA 4922	NA 4922	RNA 4922	NA 4922	RNA 4922
NA 4924	2960	RNA 4924	1930	120	135	165	45	19100	44400	NA 4924	RNA 4924	NA 4924	RNA 4924	NA 4924	RNA 4924
NA 4926	4030	RNA 4926	2360	130	150	180	50	27000	55100	NA 4926	RNA 4926	NA 4926	RNA 4926	NA 4926	RNA 4926
NA 4928	4290	RNA 4928	2500	140	160	190	50	22800	59100	NA 4928	RNA 4928	NA 4928	RNA 4928	NA 4928	RNA 4928
NA 4930	6380	RNA 4930	4090	150	170	210	60	33100	72700	—	—	—	—	—	—
NA 4932	6750	RNA 4932	4310	160	180	220	60	34300	77500	—	—	—	—	—	—
NA 4934	7110	RNA 4934	4530	170	190	230	60	35400	82600	—	—	—	—	—	—
NA 4936	10200	RNA 4936	6250	180	205	250	69	44300	101000	—	—	—	—	—	—
NA 4938	10700	RNA 4938	6500	190	215	260	69	44900	104000	—	—	—	—	—	—
NA 4940	15400	RNA 4940	10400	200	225	280	80	52900	114000	—	—	—	—	—	—
NA 4944	16700	RNA 4944	11200	220	245	300	80	54700	122000	—	—	—	—	—	—
NA 4948	18000	RNA 4948	12000	240	265	320	80	57600	135000	—	—	—	—	—	—
NA 4952	31100	RNA 4952	21200	260	290	360	100	86400	194000	—	—	—	—	—	—
NA 4956	33100	RNA 4956	22500	280	310	380	100	89400	208000	—	—	—	—	—	—
NA 4960	51400	RNA 4960	33400	300	340	420	118	115000	270000	—	—	—	—	—	—
NA 4964	54400	RNA 4964	35200	320	360	440	118	119000	288000	—	—	—	—	—	—
NA 4968	57300	RNA 4968	37000	340	380	460	118	124000	308000	—	—	—	—	—	—
NA 4972	60200	RNA 4972	38700	360	400	480	118	128000	327000	—	—	—	—	—	—
NA 4976	90300	RNA 4976	56400	380	430	520	140	157000	411000	—	—	—	—	—	—
NA 4980	94400	RNA 4980	58800	400	450	540	140	162000	435000	—	—	—	—	—	—
NA 4984	98500	RNA 4984	61200	420	470	560	140	167000	460000	—	—	—	—	—	—
NA 4988	131000	RNA 4988	86900	440	490	600	160	195000	523000	—	—	—	—	—	—



RODAMIENTO DE AGUJAS

MACHINED TYPE
NEEDLE ROLLER BEARINGS

Inch Dimension



IKO NUMERO	PESO	DIMENSIONES						CAP. DINAMICA DE CARGA BASICA (kgf)	CAP. ESTATICA DE CARGA BASICA (kgf)	PISTA INTERIOR	TORRINGTON	MCGILL	R.B.C.	INA
		Fw		D		C								
BR	(g)	pulg	mm	pulg	mm	pulg	mm			LRB	HJ	MR	SJ	NCS
BR 101812	49	3/8	15.875	1 1/8	28.575	3/4	19.050	1930	2010	LRB 61012	HJ-101812	MR-10-N	SJ 7133	NCS 1012
BR 122012	56	3/4	19.050	1 1/4	31.750	3/4	19.050	2220	2490	LRB 81212	HJ-122012	MR-12-N	SJ 7153	NCS 1212
BR 122016	75	3/4	19.050	1 1/4	31.750	1	25.400	2810	3380	LRB 81216	HJ-122016	MR-12	SJ 7154	NCS 1216
BR 142212	63	7/8	22.225	1 3/8	34.925	3/4	19.050	2340	2770	LRB 101412	HJ-142212	MR-14-N	SJ 7173	NCS 1412
BR 142216	84.5	7/8	22.225	1 3/8	34.925	1	25.400	2970	3760	LRB 101416	HJ-142216	MR-14	SJ 7174	NCS 1416
BR 162412	69	1	25.400	1 1/2	38.100	3/4	19.050	2580	3250	LRB 121612	HJ-162412	MR-16-N	SJ 7193	NCS 1612
BR 162416	92.5	1	25.400	1 1/2	38.100	1	25.400	3280	4420	LRB 121616	HJ-162416	MR-16	SJ 7194	NCS 1616
BR 182616	102	1 1/8	28.575	1 5/8	41.275	1	25.400	3560	5090	LRB 141816	HJ-182616	MR-18-N	SJ 7214	NCS 1816
BR 182620	128	1 1/8	28.575	1 5/8	41.275	1 1/4	31.750	4410	6690	LRB 141820	HJ-182620	MR-18	SJ 7215	NCS 1820
BR 202816	110	1 1/4	31.750	1 3/4	44.450	1	25.400	3670	5450	LRB 162016	HJ-202816	MR-20-N	SJ 7234	NCS 2016
BR 202820	138	1 1/4	31.750	1 3/4	44.450	1 1/4	31.750	4550	7180	LRB 162020	HJ-202820	MR-20	SJ 7235	NCS 2020
BR 223016	119	1 3/8	34.925	1 7/8	47.625	1	25.400	3930	6120	LRB 182216	HJ-223016	MR-22-N	SJ 7254	NCS 2216
BR 223020	149	1 3/8	34.925	1 7/8	47.625	1 1/4	31.750	4870	8060	LRB 182220	HJ-223020	MR-22	SJ 7255	NCS 2220
BR 243316	149	1 1/2	38.100	2 1/8	52.388	1	25.400	4480	6820	LRB 202416	HJ-243316	MR-24-N	SJ 7274	NCS 2416
BR 243320	187	1 1/2	38.100	2 1/8	52.388	1 1/4	31.750	5530	8980	LRB 202420	HJ-243320	MR-24	SJ 7275	NCS 2420
BR 263516	158	1 5/8	41.275	2 3/8	55.562	1	25.400	4670	7230	LRB 222616	HJ-263516	MR-26-N	SJ 7294	NCS 2616
BR 263520	199	1 5/8	41.275	2 3/8	55.562	1 1/4	31.750	5670	9530	LRB 222620	HJ-263520	MR-26	SJ 7295	NCS 2620
BR 283716	170	1 3/4	44.450	2 5/8	58.738	1	25.400	4850	7980	LRB 242816	HJ-283716	MR-28-N	SJ 7314	NCS 2816
BR 283720	215	1 3/4	44.450	2 5/8	58.738	1 1/4	31.750	6010	10500	LRB 242820	HJ-283720	MR-28	SJ 7315	NCS 2820
BR 283820	250	1 3/4	44.450	2 5/8	60.325	1 1/4	31.750	6010	10500	LRB 242820	-	-	-	-
BR 303920	225	1 7/8	47.625	2 7/8	61.912	1 1/4	31.750	6130	11000	LRB 243020	HJ-303920	MR-30	SJ 7335	NCS 3020
BR 324116	190	2	50.800	2 9/8	65.088	1	25.400	5200	9110	LRB 263216	HJ-324116	MR-32-N	SJ 7354	NCS 3216
BR 324120	240	2	50.800	2 9/8	65.088	1 1/4	31.750	6440	12000	LRB 263220	HJ-324120	MR-32	SJ 7355	NCS 3220
BR 364824	435	2 1/4	57.150	3	76.200	1 1/2	38.100	9200	16100	LRB 283624	HJ-364824	MR-36-N	SJ 8406	NCS 3624
BR 364828	510	2 1/4	57.150	3	76.200	1 3/4	44.450	10700	19500	LRB 283628	HJ-364828	MR-36	SJ 8407	-
BR 405224	475	2 1/2	63.500	3 1/4	82.550	1 1/2	38.100	9840	17700	LRB 324024	HJ-405224	MR-40-N	SJ 8446	NCS 4024
BR 405228	555	2 1/2	63.500	3 1/4	82.550	1 3/4	44.450	11200	21400	LRB 324028	HJ-405228	MR-40	SJ 8447	-
BR 445624	510	2 3/4	69.850	3 1/2	88.900	1 1/2	38.100	10100	19300	LRB 364424	HJ-445624	MR-44-N	SJ 8476	NCS 4424
BR 445628	600	2 3/4	69.850	3 1/2	88.900	1 3/4	44.450	11700	23300	LRB 364428	HJ-445628	MR-44	SJ 8477	-
BR 486024	555	3	76.200	3 3/4	95.250	1 1/2	38.100	10700	21600	LRB 404824	HJ-486024	MR-48-N	SJ 8516	NCS 4824
BR 486028	650	3	76.200	3 3/4	95.250	1 3/4	44.450	12400	26100	LRB 404828	HJ-486028	MR-48	SJ 8517	-
BR 526828	990	3 1/4	82.550	4 1/4	107.950	1 3/4	44.450	14400	26400	LRB 445228	HJ-526828	MR-52	SJ 9567	NCS 5228
BR 526832	1140	3 1/4	82.550	4 1/4	107.950	2	50.800	15700	29500	LRB 445232	HJ-526832	-	SJ 9568	NCS 5232
BR 567232	1220	3 1/2	88.900	4 1/2	114.300	2	50.800	16500	32100	LRB 485632	HJ-567232	MR-56	SJ 9608	NCS 5632
BR 607632	1290	3 3/4	95.250	4 3/4	120.650	2	50.800	17200	34900	LRB 526032	HJ-607632	MR-60	SJ 9648	-
BR 648032	1370	4	101.600	5	127.000	2	50.800	18000	37500	LRB 566432	HJ-648032	MR-64	SJ 9688	-

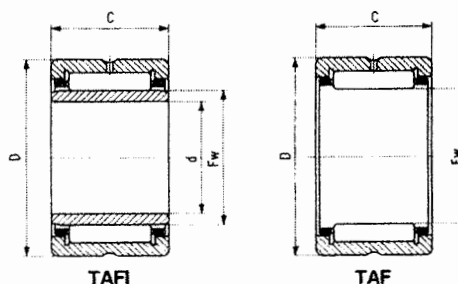


RODAMIENTO DE AGUJAS

MACHINED TYPE

NEEDLE ROLLER BEARINGS

Metric Dimension



DIMENSION TABLE

INTERCHANGE TABLE

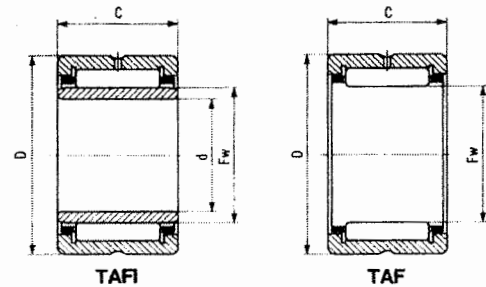
IKO NUMERO	PESO	IKO NUMERO	PESO	DIMENSIONES mm				CAP. DINAMICA DE CARGA BASICA (kgf)	CAP. ESTATICA DE CARGA BASICA (kgf)	INA		SKF		FAG	
TAFI	(g)	TAF	(g)	d	Fw	D	c			NKI	NK	NKI	NK	NKJ	NK
-	-	TAF 51010	3.4	-	5	10	10	250	200	-	NK 5/10 TN	-	NK 5/10 TN	-	NK 5/10 B.TN
-	-	TAF 51012	4.2	-	5	10	12	310	270	-	NK 5/12 TN	-	NK 5/12	-	NK 5/12 TN
-	-	TAF 61212	6.4	-	6	12	12	350	320	-	NK 6/12 TN	-	NK 6/12 TN	-	NK 6/12 TN
-	-	TAF 71410	6.9	-	7	14	10	370	300	-	NK 7/10 TN	-	NK 7/10 TN	-	NK 7/10 TN
-	-	TAF 71412	8.3	-	7	14	12	470	410	-	NK 7/12 TN	-	NK 7/12 TN	-	NK 7/12 TN
TAFI 51512	11.9	TAF 81512	9.1	5	8	15	12	520	480	NKI 5/12 TN	NK 8/12 TN	NKI 5/12	NK 8/12	NKJ 5/12	NK 8/12
TAFI 51516	16.7	TAF 81516	12.9	5	8	15	16	720	740	NKI 5/16 TN	NK 8/16 TN	NKI 5/16 TN	NK 8/16 TN	NKJ 5/16	NK 8/16
TAFI 61612	13	TAF 91612	9.8	6	9	16	12	580	540	NKI 6/12 TN	NK 9/12 TN	NKI 6/12 TN	NK 9/12 TN	NKJ 6/12	NK 9/12
TAFI 61616	17.5	TAF 91616	13.2	6	9	16	16	780	840	NKI 6/16 TN	NK 9/16 TN	NKI 6/16 TN	NK 9/16 TN	NKJ 6/16	NK 9/16
TAFI 71712	14.3	TAF 101712	10.7	7	10	17	12	600	610	NKI 7/12 TN	NK 10/12 TN	NKI 7/12	NK 10/12	NKJ 7/12	NK 10/12
TAFI 71716	19.2	TAF 101716	14.3	7	10	17	16	840	940	NKI 7/16 TN	NK 10/16 TN	NKI 7/16 TN	NK 10/16 TN	NKJ 7/16	NK 10/16
TAFI 91912	18.7	TAF 121912	12.2	9	12	19	12	670	740	NKI 9/12	NK 12/12	NKI 9/12	NK 12/12	NKJ 9/12	NK 12/12
TAFI 91916	22.5	TAF 121916	18.3	9	12	19	16	940	1140	NKI 9/16	NK 12/16	NKI 9/16 TN	NK 12/16 TN	NKJ 9/16	NK 12/16
TAFI 102216	30	TAF 142216	21	10	14	22	16	1200	1400	NKI 10/16	NK 14/16	NKI 10/16	NK 14/16	NKJ 10/16 A	NK 14/16 A
TAFI 102220	38	TAF 142220	26.5	10	14	22	20	1510	1890	NKI 10/20	NK 14/20	NKI 10/20	NK 14/20	NKJ 10/20 A	NK 14/20 A
-	-	TAF 152316	22.5	-	15	23	16	1260	1520	-	NK 15/16	-	NK 15/16	-	NK 15/16 A
-	-	TAF 152320	28	-	15	23	20	1590	2080	-	NK 15/20	-	NK 15/20	-	NK 15/20 A
TAFI 122416	33.5	TAF 162416	23	12	16	24	16	1250	1540	NKI 12/16	NK 16/16	NKI 12/16	NK 16/16	NKJ 12/16 A	NK 16/16 A
TAFI 122420	42.5	TAF 162420	29	12	16	24	20	1580	2080	NKI 12/20	NK 16/20	NKI 12/20	NK 16/20	NKJ 12/20 A	NK 16/20 A
-	-	TAF 172516	24.5	-	17	25	16	1310	1660	-	NK 17/16	-	NK 17/16	-	NK 17/16 A
-	-	TAF 172520	30.5	-	17	25	20	1680	2250	-	NK 17/20	-	NK 17/20	-	NK 17/20 A
-	-	TAF 182616	25.5	-	18	26	16	1370	1780	-	NK 18/16	-	NK 18/16	-	NK 18/16 A
-	-	TAF 182620	32	-	18	26	20	1730	2410	-	NK 18/20	-	NK 18/20	-	NK 18/20 A
TAFI 152716	39.5	TAF 192716	27	15	19	27	16	1430	1910	NKI 15/16	NK 19/16	NKI 15/16	NK 19/16	NKJ 15/16 A	NK 19/16 A
TAFI 152720	50	TAF 192720	34	15	19	27	20	1800	2580	NKI 15/20	NK 19/20	NKI 15/20	NK 19/20	NKJ 15/20 A	NK 19/20 A
-	-	TAF 202816	27.5	-	20	28	16	1420	1910	-	NK 20/16	-	NK 20/16	-	NK 20/16 A
-	-	TAF 202820	35.5	-	20	28	20	1790	2590	-	NK 20/20	-	NK 20/20	-	NK 20/20 A
TAFI 172916	43.5	TAF 212916	29	17	21	29	16	1470	2040	NKI 17/16	NK 21/16	NKI 17/16	NK 21/16	NKJ 17/16 A	NK 21/16 A
TAFI 172920	54	TAF 212920	36	17	21	29	20	1860	2760	NKI 17/20	NK 21/20	NKI 17/20	NK 21/20	NKJ 17/20 A	NK 21/20 A
-	-	TAF 223016	30	-	22	30	16	1520	2180	-	NK 22/16	-	NK 22/16	-	NK 22/16 A
-	-	TAF 223020	37.5	-	22	30	20	1930	2930	-	NK 22/20	-	NK 22/20	-	NK 22/20 A
TAFI 203216	48.5	TAF 243216	32	20	24	32	16	1560	2300	NKI 20/16	NK 24/16	NKI 20/16	NK 24/16	NKJ 20/16 A	NK 24/16 A
TAFI 203220	61	TAF 243220	40.5	20	24	32	20	1980	3110	NKI 20/20	NK 24/20	NKI 20/20	NK 24/20	NKJ 20/20 A	NK 24/20 A
-	-	TAF 253316	33.5	-	25	33	16	1610	2420	-	NK 25/16	-	NK 25/16	-	NK 25/16 A
-	-	TAF 253320	42	-	25	33	20	2040	3280	-	NK 25/20	-	NK 25/20	-	NK 25/20 A
TAFI 223416	52	TAF 263416	34.5	22	26	34	16	1680	2540	NKI 22/16	NK 26/16	NKI 22/16	NK 26/16	NKJ 22/16 A	NK 26/16 A
TAFI 223420	67.5	TAF 263420	43.5	22	26	34	20	2109	3440	NKI 22/20	NK 26/20	NKI 22/20	NK 26/20	NKJ 22/20 A	NK 26/20 A
-	-	TAF 283720	51.5	-	28	37	20	2210	3780	-	NK 28/20	-	NK 28/20	-	NK 28/20 A
-	-	TAF 283730	83.5	-	28	37	30	3170	6610	-	NK 28/30	-	NK 28/30	-	NK 28/30 ASR 1
TAFI 253820	82	TAF 293820	57	25	29	38	20	2200	3790	NKI 25/20	NK 29/20	NKI 25/20	NK 29/20	NKJ 25/20 A	NK 29/20 A



RODAMIENTO DE AGUJAS

MACHINED TYPE
NEEDLE ROLLER BEARINGS

Metric Dimension



DIMENSION TABLE

IKO NUMERO	PESO	IKO NUMERO	PESO	DIMENSIONES mm				CAP. DINAMICA DE CARGA BASICA (kgf)	CAP. ESTATICA DE CARGA BASICA (kgf)	INA		SKF		FAG	
TAFI	(g)	TAF	(g)	d	Fw	D	C			NKI	NK	NKI	NK	NKJ	NK
TAFI 7510535	945	TAF 8510535	610	75	85	105	35	10400	21400	NKI 75/35	NK 85/35	NKI 75/35	NK 85/35	NKJ 75/35 A	NK 85/35 A
TAFI 8011025	710	TAF 9011025	456	80	90	110	25	7890	15300	NKI 80/25	NK 90/25	NKI 80/25	NK 90/25	NKJ 80/25 A	NK 90/25 A
TAFI 8011035	995	TAF 9011035	640	80	90	110	35	10500	22100	NKI 80/35	NK 90/35	NKI 80/35	NK 90/35	NKJ 80/35 A	NK 90/35 A
TAFI 8511526	775	TAF 9511526	495	85	95	115	28	8130	16200	NKI 85/28	NK 95/28	NKI 85/28	NK 95/28	NKJ 85/28 ASR 1	NK 95/28 ASR 1
TAFI 8511536	1080	TAF 9511536	690	85	95	115	38	10900	23500	NKI 85/38	NK 95/38	NKI 85/38	NK 95/38	NKJ 85/38 A	NK 95/38 A
TAFI 9012026	620	TAF 10012026	525	90	100	120	26	8410	17200	NKI 90/26	NK 100/26	NKI 90/26	NK 100/26	NKJ 90/26 A	NK 100/26 A
TAFI 9012036	1140	TAF 10012036	725	90	100	120	36	11200	24900	NKI 90/36	NK 100/36	NKI 90/36	NK 100/36	NKJ 90/36 A	NK 100/36 A
TAFI 9512528	860	TAF 10512528	545	95	105	125	25	8640	18100	NKI 95/26	NK 105/26	NKI 95/26	NK 105/26	NKJ 95/26 ASR 1	NK 105/26 ASR 1
TAFI 9512538	1190	TAF 10512538	780	95	105	125	38	11500	26300	NKI 95/38	NK 105/38	NKI 95/38	NK 105/38	NKJ 95/38 ASR 1	NK 105/38 ASR 1
TAFI 10013030	1040	TAF 11013030	680	100	110	130	30	10800	24400	NKI 100/30	NK 110/30	NKI 100/30	NK 110/30	NKJ 100/30 A	NK 110/30 A
TAFI 10013040	1380	TAF 11013040	880	100	110	130	40	13600	33000	NKI 100/40	NK 110/40	NKI 100/40	NK 110/40	NKJ 100/40 A	NK 110/40 A

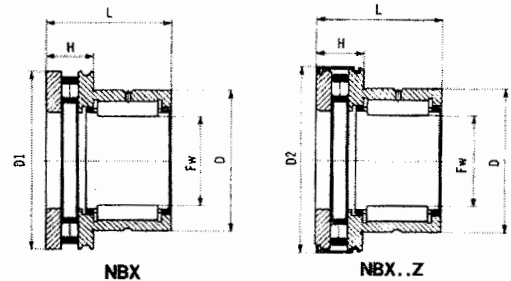
INTERCHANGE TABLE



RODAMIENTO COMBINADO AXIAL Y RADIAL

NEEDLE ROLLER BEARINGS
WITH THRUST ROLLER BEARINGS

Metric Dimension



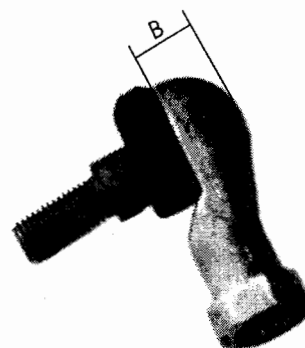
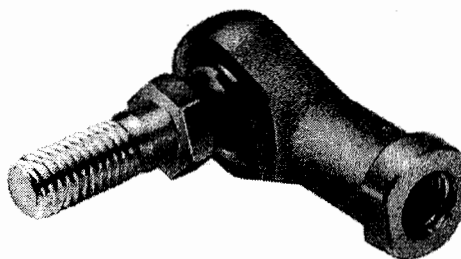
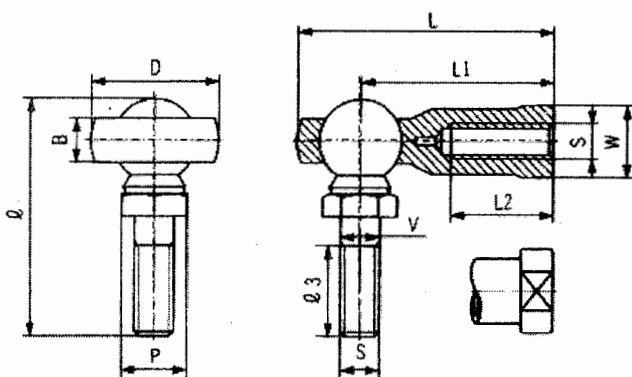
DIMENSION TABLE

DIMENSIONES										CAP. DINAMICA DE CARGA BASICA		CAP. ESTATICA DE CARGA BASICA		INA		SKF		FAG	
IKO NUMERO	PESO	IKO NUMERO	PESO	DIMENSIONES mm						CAP. DINAMICA DE CARGA BASICA (kgf)		CAP. ESTATICA DE CARGA BASICA (kgf)		INA		SKF		FAG	
NBX	(g)	NBX..Z	(g)	Fw	D	D1	D2	L	H	RADIAL	AXIAL	RADIAL	AXIAL	NKXR	NKXR..Z	NKXR	NKXR..Z	NAXR	NAXR..Z
NBX 1523	54	NBX 1523 Z	55	15	24	28	29	23	9	1260	1040	1520	2430	NKXR 15	NKXR 15 Z	NKXR 15	NKXR 15 Z	NAXR 15	NAXR 15 Z
NBX 1725	61	NBX 1725 Z	63	17	26	30	31	25	9	1310	1090	1680	2680	NKXR 17	NKXR 17 Z	NKXR 17	NKXR 17 Z	NAXR 17	NAXR 17 Z
NBX 2030	94	NBX 2030 Z	97.5	20	30	35	38	30	10	1790	1810	2590	4550	NKXR 20	NKXR 20 Z	NKXR 20	NKXR 20 Z	NAXR 20	NAXR 20 Z
NBX 2530	143	NBX 2530 Z	147	25	37	42	43	30	11	2040	2320	3280	6190	NKXR 25	NKXR 25 Z	NKXR 25	NKXR 25 Z	NAXR 25	NAXR 25 Z
NBX 3030	160	NBX 3030 Z	166	30	42	47	48	30	11	2050	2660	3480	7740	NKXR 30	NKXR 30 Z	NKXR 30	NKXR 30 Z	NAXR 30	NAXR 30 Z
NBX 3530	186	NBX 3530 Z	193	35	47	52	53	30	12	2750	2850	4710	8770	NKXR 35	NKXR 35 Z	NKXR 35	NKXR 35 Z	NAXR 35	NAXR 35 Z
NBX 4032	240	NBX 4032 Z	248	40	52	60	61	32	13	3000	4070	5520	12800	NKXR 40	NKXR 40 Z	NKXR 40	NKXR 40 Z	NAXR 40 X	NAXR 40 X Z
NBX 4532	293	NBX 4532 Z	302	45	58	65	68.5	32	14	3170	4160	6130	13600	NKXR 45	NKXR 45 Z	NKXR 45	NKXR 45 Z	NAXR 45 X	NAXR 45 X Z
NBX 5035	315	NBX 5035 Z	325	50	62	70	71.5	35	14	4300	4410	8500	15100	NKXR 50	NKXR 50 Z	NKXR 50	NKXR 50 Z	NAXR 50 X	NAXR 50 X Z
NBX 6040	501	-	-	60	72	85	-	40	17	4840	6580	10500	22900	-	-	-	-	-	-

INTERCHANGE TABLE



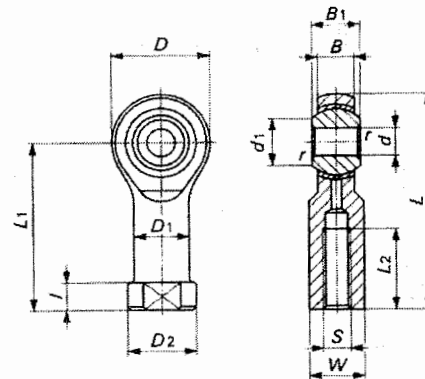
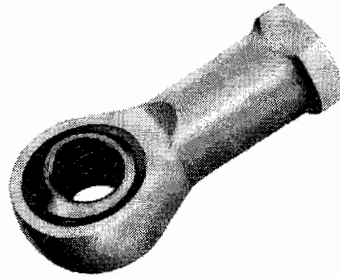
CABEZA ROTULA CON PERNO



IKO NUMERO LHS	PESO (g)	ROSCA S	DIMENSIONES (mm)											CAR. ESTATICA DE CARGA BASICA (kgf)
			V	D	LHS RBL B		L	L1	L2	W	I	P	I3	
LHS-5D	22	M5 × 0.8	5	17	6		35.5	27	16	9	30.5	8	11	210
LHS-6D (RBL-6D)	32	M6 × 1	6	19.5	6.75	11	39.7	30	16	11	36.5	10	14	330
LHS-10D (RBL-10D)	102	M10 × 1.5	10	28	10.75	16	57	43	23	17	52.5	13	18	770
LHS-12D	160	M12 × 1.75	12	32	12		66	50	27	19	61	17	20	1260
LHS-14D	227	M14 × 2	14	36	13.5		75	57	30	22	69	17	22	1490



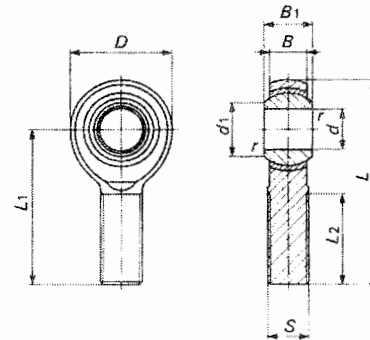
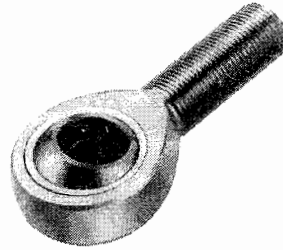
CABEZA ROTULA HEMBRA (pulgadas)



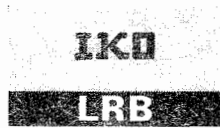
NUMERO	PESO	DIMENSIONES pulg (mm)														DIAM. BOLA	CAP. DINAMICA DE CARGA BASICA	CAP. ESTATICA DE CARGA BASICA
PHSB	g	d	Thread S class 3B	D	B	B ₁	d ₁	L	l	L ₁	L ₂	W	D ₁	D ₂	r	inch (mm)	Cd lbf	Cs lbf
PHSB 2	6,8	.1250 (3.175)	.1380 -32UNC	.469 (11.91)	.187 (4.75)	.250 (6.35)	.187 (4.75)	1.046 (26.57)	.187 (4.75)	.812 (20.62)	.375 (9.53)	.250 (6.35)	.250 (6.35)	.312 (7.92)	.012 (0.3)	5/16 (7.938)	420	1 350
PHSB 2.5	11	.1562 (3.967)	.1640 -32UNC	.562 (14.27)	.219 (5.56)	.281 (7.14)	.249 (6.32)	1.156 (29.36)	.187 (4.75)	.875 (22.23)	.375 (9.53)	.281 (7.14)	.281 (7.14)	.344 (8.74)	.012 (0.3)	3/8 (9.525)	580	1 900
PHSB 3	14	.1900 (4.826)	.1900 -32UNF	.625 (15.88)	.250 (6.35)	.312 (7.92)	.306 (7.77)	1.375 (34.93)	.187 (4.75)	1.062 (26.97)	.562 (14.27)	.312 (7.92)	.312 (7.92)	.406 (10.31)	.012 (0.3)	7/16 (11.112)	780	2 090
PHSB 4	23	.2500 (6.350)	.2500 -28UNF	.750 (19.05)	.281 (7.14)	.375 (9.53)	.355 (9.02)	1.687 (42.85)	.187 (4.75)	1.312 (33.32)	.750 (19.05)	.375 (9.53)	.375 (9.53)	.468 (11.89)	.020 (0.5)	9/16 (13.987)	1 030	3 040
PHSB 5	36	.3125 (7.938)	.3125 -24UNF	.875 (22.23)	.344 (8.74)	.437 (11.10)	.447 (11.35)	1.812 (46.02)	.187 (4.75)	1.375 (34.93)	.750 (19.05)	.437 (11.10)	.437 (11.10)	.500 (12.70)	.020 (0.5)	5/8 (15.875)	1 530	3 800
PHSB 6	59	.3750 (9.525)	.3750 -24UNF	1.000 (25.40)	.406 (10.31)	.500 (12.70)	.517 (13.13)	2.125 (53.98)	.250 (6.35)	1.625 (41.28)	.937 (23.80)	.562 (14.27)	.562 (14.27)	.687 (17.45)	.020 (0.5)	3/4 (18.256)	2 080	4 980
PHSB 7	82	.4375 (11.112)	.4375 -20UNF	1.125 (28.58)	.437 (11.10)	.562 (14.27)	.586 (14.88)	2.375 (60.33)	.250 (6.35)	1.812 (46.02)	1.062 (26.97)	.625 (15.88)	.625 (15.88)	.750 (19.05)	.020 (0.5)	3/4 (20.638)	2 520	6 020
PHSB 8	132	.5000 (12.700)	.5000 -20UNF	1.312 (33.32)	.500 (12.70)	.625 (15.88)	.698 (17.73)	2.781 (70.64)	.250 (6.35)	2.125 (53.98)	1.187 (30.15)	.750 (19.05)	.750 (19.05)	.875 (22.23)	.020 (0.5)	3/4 (23.812)	3 330	8 370
PHSB 10	191	.6250 (15.875)	.6250 -18UNF	1.500 (38.10)	.562 (14.27)	.750 (19.05)	.839 (21.31)	3.250 (82.55)	.312 (7.92)	2.500 (63.50)	1.500 (38.10)	.875 (22.23)	.875 (22.23)	1.000 (25.40)	.020 (0.5)	1 1/4 (28.575)	4 500	9 050
PHSB 12	286	.7500 (19.050)	.7500 -16UNF	1.750 (44.45)	.687 (17.45)	.875 (22.23)	.978 (24.84)	3.750 (95.25)	.312 (7.92)	2.875 (73.03)	1.750 (44.45)	1.000 (25.40)	1.000 (25.40)	1.125 (28.58)	.020 (0.5)	1 1/4 (33.338)	6 410	12 700
PHSB 16	998	1.0000 (25.400)	1.2500 -12UNF	2.750 (69.85)	1.000 (25.40)	1.375 (34.93)	1.269 (32.23)	5.500 (139.70)	.436 (11.07)	4.125 (104.78)	2.125 (53.98)	1.500 (38.10)	1.500 (38.10)	1.750 (44.45)	.020 (0.5)	1 1/4 (47.625)	13 300	19 500



CABEZA ROTULA MACHO (pulgadas)

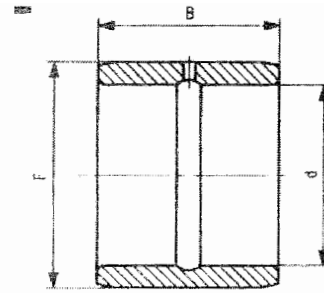


NUMERO	PESO	DIMENSIONES pulg (mm)										DIAM. BOLA	CAP. DINAMICA DE CARGA BASICA	CAP. ESTATICA DE CARGA BASICA
POSB	g	d	Thread S class 3A	D	B	B ₁	d ₁	L	L ₁	L ₂	r	inch (mm)	C _d lbf	C _s lbf
POSB 2	5.4	.1250 (3.175)	.1380 -32UNC	.469 (11.91)	.187 (4.75)	.250 (6.35)	.187 (4.75)	1.172 (29.77)	.937 (23.80)	.500 (12.70)	.012 (0.3)	$\frac{5}{16}$ (7.938)	420	500
POSB 2.5	9.1	.1562 (3.967)	.1640 -32UNC	.562 (14.27)	.219 (5.56)	.281 (7.14)	.249 (6.32)	1.406 (35.71)	1.125 (28.58)	.625 (15.88)	.012 (0.3)	$\frac{3}{8}$ (9.525)	580	780
POSB 3	14	.1900 (4.826)	.1900 -32UNF	.625 (15.88)	.250 (6.35)	.312 (7.92)	.306 (7.77)	1.563 (39.70)	1.250 (31.75)	.750 (19.05)	.012 (0.3)	$\frac{3}{8}$ (11.112)	780	1 120
POSB 4	23	.2500 (6.350)	.2500 -28UNF	.750 (19.05)	.281 (7.14)	.375 (9.53)	.355 (9.02)	1.937 (49.20)	1.562 (39.67)	1.000 (25.40)	.020 (0.5)	$\frac{1}{2}$ (13.097)	1 030	2 040
POSB 5	36	.3125 (7.938)	.3125 -24UNF	.875 (22.23)	.344 (8.74)	.437 (11.10)	.447 (11.35)	2.312 (58.72)	1.875 (47.63)	1.250 (31.75)	.020 (0.5)	$\frac{5}{8}$ (15.875)	1 530	3 270
POSB 6	54	.3750 (9.525)	.3750 -24UNF	1.000 (25.40)	.406 (10.31)	.500 (12.70)	.517 (13.13)	2.438 (61.93)	1.938 (49.23)	1.250 (31.75)	.020 (0.5)	$\frac{3}{4}$ (18.256)	2 080	4 980
POSB 7	77	.4375 (11.112)	.4375 -20UNF	1.125 (28.58)	.437 (11.10)	.562 (14.27)	.586 (14.88)	2.688 (68.28)	2.125 (53.98)	1.375 (34.93)	.020 (0.5)	$\frac{1}{2}$ (20.638)	2 520	6 020
POSB 8	122	.5000 (12.700)	.5000 -20UNF	1.312 (33.32)	.500 (12.70)	.625 (15.88)	.698 (17.73)	3.094 (78.59)	2.438 (61.93)	1.500 (38.10)	.020 (0.5)	$\frac{1}{2}$ (23.812)	3 300	8 370
POSB 10	186	.6250 (15.875)	.6250 -18UNF	1.500 (38.10)	.562 (14.27)	.750 (19.05)	.839 (21.31)	3.375 (85.73)	2.625 (66.68)	1.625 (41.28)	.020 (0.5)	1 $\frac{1}{4}$ (28.575)	4 500	9 050
POSB 12	295	.7500 (19.050)	.7500 -16UNF	1.750 (44.45)	.687 (17.45)	.875 (22.23)	.978 (24.84)	3.750 (95.25)	2.875 (73.03)	1.750 (44.45)	.020 (0.5)	1 $\frac{3}{4}$ (33.338)	6 410	12 700
POSB 16	1129	1.0000 (25.400)	1.2500 -12UNF	2.750 (69.85)	1.000 (25.40)	1.375 (34.93)	1.269 (32.23)	5.500 (139.70)	4.125 (104.78)	2.125 (53.98)	.020 (0.5)	1 $\frac{7}{8}$ (47.625)	13 300	25 300



ANILLO INTERIOR INNER RACES FOR MACHINED TYPE NEEDLE ROLLER BEARINGS

Inch Dimension



LRB

DIMENSION TABLE

IKO	NUMERO	PESO	DIMENSIONES				NUMERO	TORRINGTON	MCGILL	R.B.C.	INA	
			d		F							B
LRB		(g)	pulg	mm	pulg	mm	mm	BR	IR	MI	IR	PI
LRB 61012		18.5	3⁄8	9.525	5⁄8	15.875	19.300	BR 101812	IR-061012	MI-6-N	—	PI 061012
LRB 81212		23.5	1⁄2	12.700	3⁄4	19.050	19.300	BR 122012	IR-081212	MI-8-N	IR-7153	PI 081212
LRB 81216		31	1⁄2	12.700	3⁄4	19.050	25.650	BR 122016	IR-081216	MI-8	IR-7154	PI 081216
LRB 101412		28	5⁄8	15.875	7⁄8	22.225	19.300	BR 142212	IR-101412	MI-10-N	IR-7173	PI 101412
LRB 101416		37.5	5⁄8	15.875	7⁄8	22.225	25.650	BR 142216	IR-101416	MI-10	IR-7174	PI 101416
LRB 121612		33	3⁄4	19.050	1	25.400	19.300	BR 162412	IR-121612	MI-12-N	IR-7193	PI 121612
LRB 121616		44	3⁄4	19.050	1	25.400	25.650	BR 162416	IR-121616	MI-12	IR-7194	PI 121616
LRB 141816		50	7⁄8	22.225	1 1⁄8	28.575	25.650	BR 182616	IR-141816	MI-14-N	IR-7214	PI 141816
LRB 141820		62	7⁄8	22.225	1 1⁄8	28.575	32.000	BR 182620	IR-141820	MI-14	IR-7215	PI 141820
LRB 162016		56	1	25.400	1 1⁄4	31.750	25.650	BR 202816	IR-162016	MI-16-N	IR-7234	PI 162016
LRB 162020		72	1	25.400	1 1⁄4	31.750	32.000	BR 202820	IR-162020	MI-16	IR-7235	PI 162020
LRB 182216		63	1 1⁄8	28.575	1 3⁄8	34.925	25.650	BR 223016	IR-182216	MI-18-N	IR-7254	PI 182216
LRB 182220		77	1 1⁄8	28.575	1 3⁄8	34.925	32.000	BR 223020	IR-182220	MI-18	IR-7255	PI 182220
LRB 202416		71	1 1⁄4	31.750	1 1⁄2	38.100	25.650	BR 243316	IR-202416	MI-20-N	—	PI 202416
LRB 202420		86	1 1⁄4	31.750	1 1⁄2	38.100	32.000	BR 243320	IR-202420	MI-20	IR-7275-C	PI 202420
LRB 222616		77	1 3⁄8	34.925	1 5⁄8	41.275	25.650	BR 263516	—	—	—	—
LRB 222620		96	1 3⁄8	34.925	1 5⁄8	41.275	32.000	BR 263520	IR-222620	MI-22-4S	IR-7295-C	PI 222620
LRB 242816		80	1 1⁄2	38.100	1 3⁄4	44.450	25.650	BR 283716	IR-242816	MI-24-N	—	PI 242816
LRB 242820		100	1 1⁄2	38.100	1 3⁄4	44.450	32.000	BR 283720	IR-242820	MI-24	IR-7315-C	PI 242820
LRB 243020		155	1 1⁄2	38.100	1 7⁄8	47.625	32.000	BR 303920	—	—	—	—
LRB 263216		135	1 5⁄8	41.275	2	50.800	25.650	BR 324116	—	MI-26-N	—	PI 263216
LRB 263220		170	1 5⁄8	41.275	2	50.800	32.000	BR 324120	IR-263220	MI-26	IR-7355-D	—
LRB 283624		300	1 3⁄4	44.450	2 1⁄4	57.150	38.350	BR 364824	IR-283624	MI-28-N	IR-8406	PI 283624
LRB 283628		345	1 3⁄4	44.450	2 1⁄4	57.150	44.700	BR 364828	IR-283628	MI-28	IR-8407	—
LRB 324024		335	2	50.800	2 1⁄2	63.500	38.350	BR 405224	IR-324024	MI-32-N	IR-8446-C	PI 324024
LRB 324028		390	2	50.800	2 1⁄2	63.500	44.700	BR 405228	IR-324028	MI-32	IR-8447-C	—
LRB 364424		375	2 1⁄4	57.150	2 3⁄4	69.850	38.350	BR 445624	IR-364424	MI-36-N	IR-8476-C	PI 364424
LRB 364428		440	2 1⁄4	57.150	2 3⁄4	69.850	44.700	BR 445628	IR-364428	MI-36	IR-8477-C	—
LRB 404824		410	2 1⁄2	63.500	3	76.200	38.350	BR 486024	IR-404824	MI-40-N	IR-8516-C	PI 404824
LRB 404828		480	2 1⁄2	63.500	3	76.200	44.700	BR 486028	IR-404828	MI-40	IR-8517-C	—
LRB 445228		530	2 3⁄4	69.850	3 1⁄4	82.550	44.700	BR 526828	IR-445228	MI-44	IR-9567	PI 445228
LRB 445232		600	2 3⁄4	69.850	3 1⁄4	82.550	51.050	BR 526832	IR-445232	—	IR-9568	PI 445232
LRB 485632		640	3	76.200	3 1⁄2	88.900	51.050	BR 567232	IR-485632	MI-48	IR-9608-C	PI 485632
LRB 526032		680	3 1⁄4	82.550	3 3⁄4	95.250	51.050	BR 607632	IR-526032	MI-52	IR-9648-C	—
LRB 566432		750	3 1⁄2	88.900	4	101.600	51.050	BR 648032	IR-566432	MI-56	IR-9688-C	—